

**Jefferson County, Iowa**  
Iowa South Zone (1402)  
Horiz. Datum: NAD83(1996)  
Vert. Datum: NAVD 1988  
US Survey Feet  
**2005**

Point Name: **532**

**Designation:** 2005-532 Jefferson Co GPS Control Point

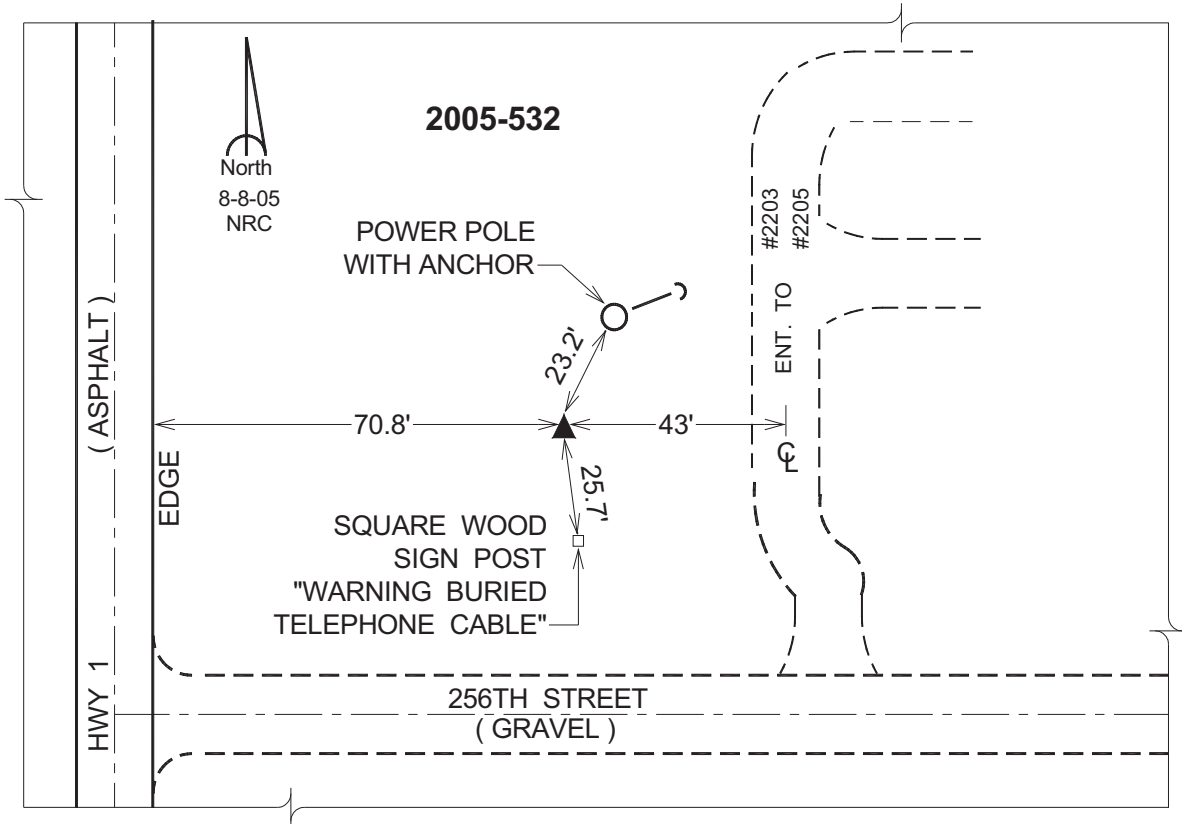
Northing: **345490.26sft**    Easting: **2068954.82sft**

Orthometric Height: **738.11sft**    Ellipsoid Height: **630.30sft**    **Geoid03**

Latitude: **40°56'16.07985"N**    Longitude: **91°56'55.77076"W**

Mapping Angle: **1°01'18"**    Combination Scale Factor: **0.99992878**

**Monument Type:** Berntsen Top Security Rod Monument with a 2-1/2" dia. domed survey cap and permanent magnet encased in a 5"dia. PVC pipe with a NGS style aluminum access cover.



*This document was prepared by DCI for use by Jefferson Co., Iowa.*