

Jefferson County, Iowa
Iowa South Zone (1402)
Horiz. Datum: NAD83(1996)
Vert. Datum: NAVD 1988
US Survey Feet
2005

Point Name: **533**

Designation: 2005-533 Jefferson Co GPS Control Point

Northing: **349318.24sft** Easting: **2087607.99sft**

Orthometric Height: **757.26sft** Ellipsoid Height: **649.39sft** **Geoid03**

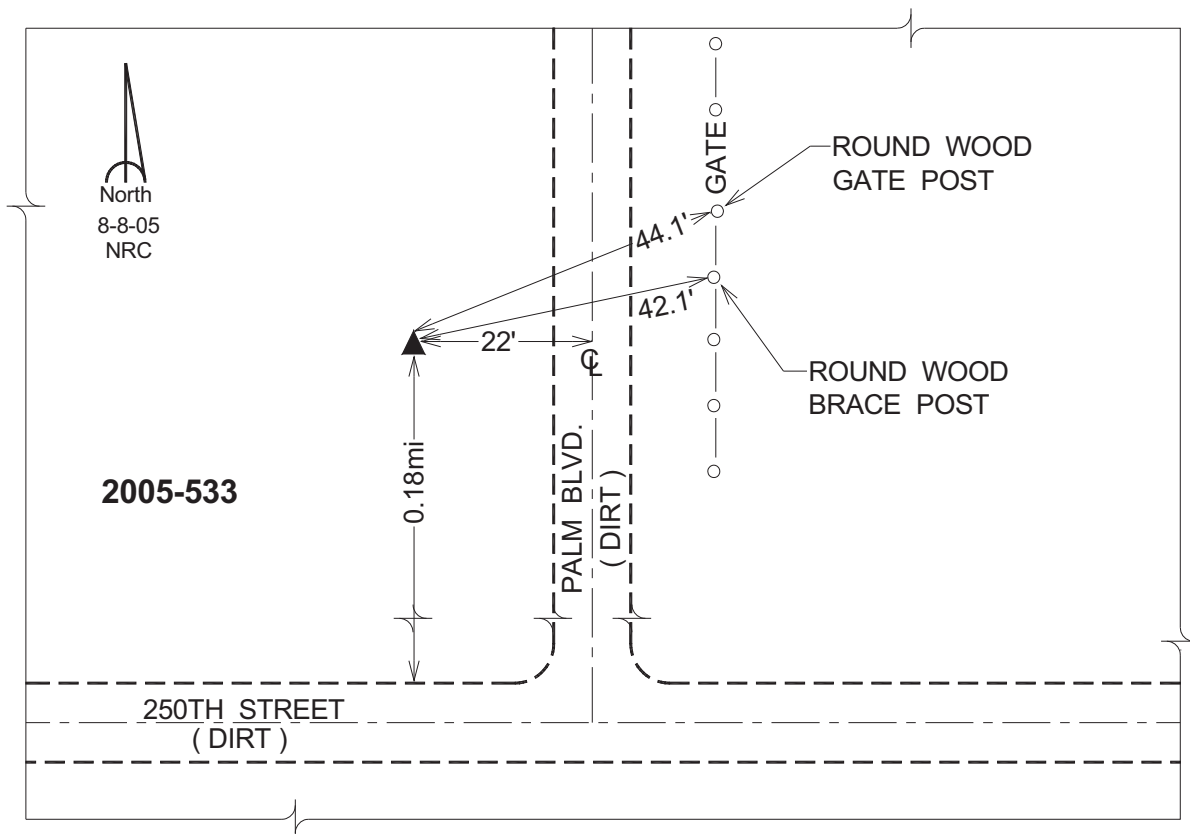
Latitude: **40°56'50.53983"N**

Longitude: **91°52'51.83019"W**

Mapping Angle: **1°03'59"**

Combination Scale Factor: **0.99992712**

Monument Type: Berntsen Top Security Rod Monument with a 2-1/2" dia. domed survey cap and permanent magnet encased in a 5"dia. PVC pipe with a NGS style aluminum access cover.



This document was prepared by DCI for use by Jefferson Co., Iowa.