

Jefferson County, Iowa
Iowa South Zone (1402)
Horiz. Datum: NAD83(1996)
Vert. Datum: NAVD 1988
US Survey Feet
2005

Point Name: **535**

Designation: 2005-535 Jefferson Co GPS Control Point

Northing: **350006.23sft** Easting: **2115039.08sft**

Orthometric Height: **755.01sft** Ellipsoid Height: **647.03sft** **Geoid03**

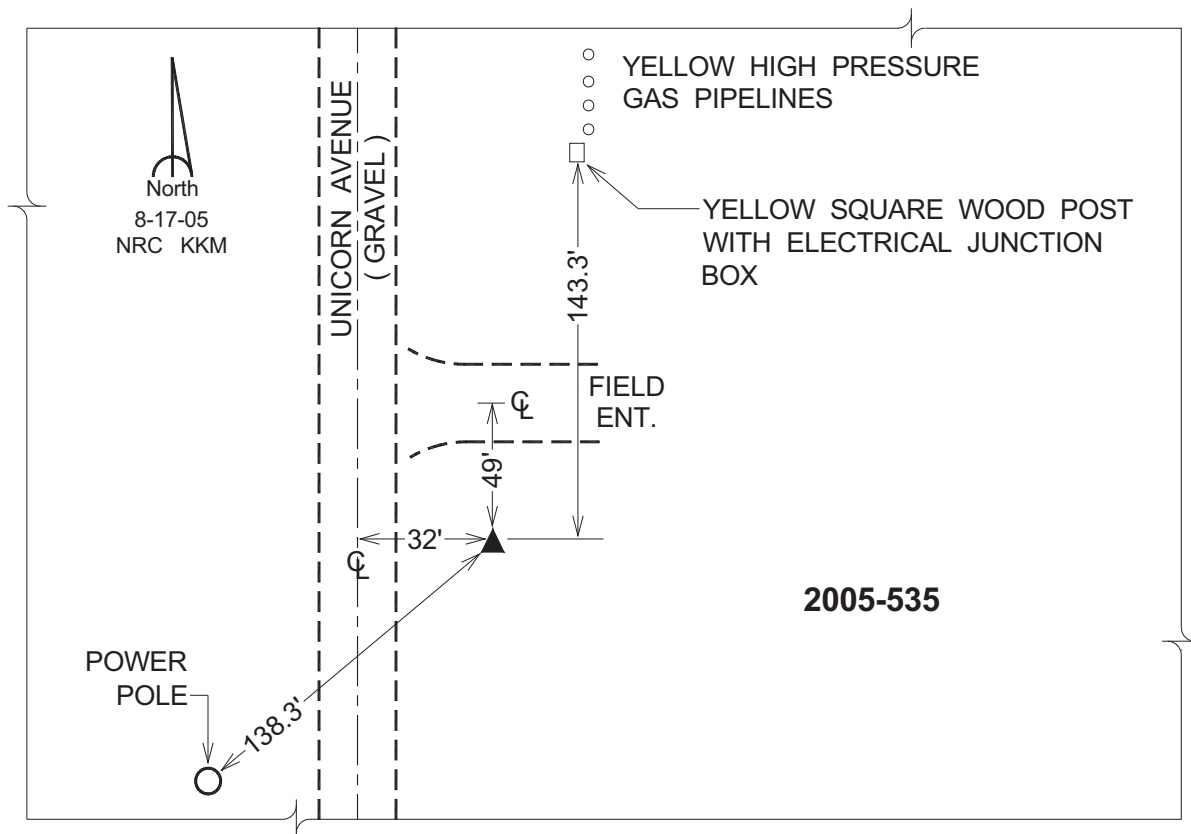
Latitude: **40°56'52.13748"N**

Longitude: **91°46'54.23871"W**

Mapping Angle: **1°07'55"**

Combination Scale Factor: **0.99992720**

Monument Type: Berntsen Top Security Rod Monument with a 2-1/2" dia. domed survey cap and permanent magnet encased in a 5"dia. PVC pipe with a NGS style aluminum access cover.



This document was prepared by DCI for use by Jefferson Co., Iowa.