

Jefferson County, Iowa
Iowa South Zone (1402)
Horiz. Datum: NAD83(1996)
Vert. Datum: NAVD 1988
US Survey Feet
2005

Point Name: **536**

Designation: 2005-536 Jefferson Co GPS Control Point

Northing: **333389.23sft** Easting: **2115749.07sft**

Orthometric Height: **679.77sft** Ellipsoid Height: **571.62sft** **Geoid03**

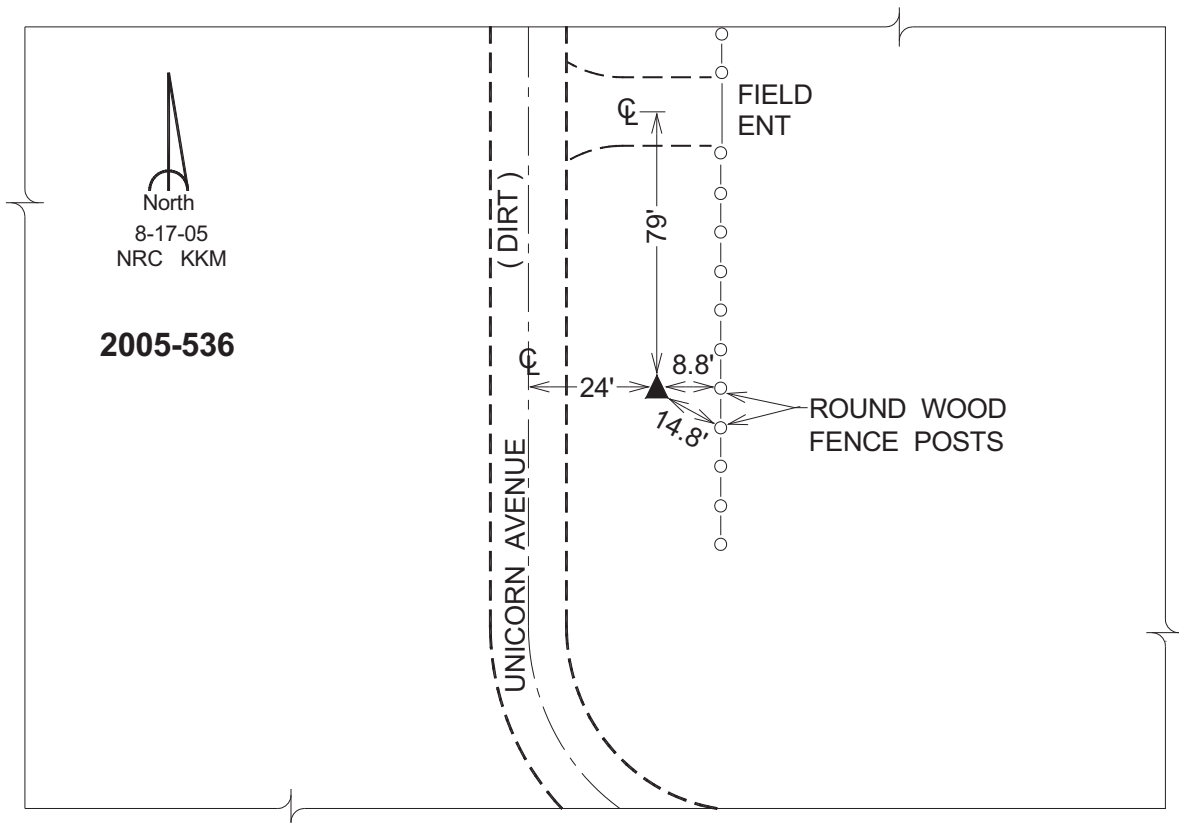
Latitude: **40°54'07.83586"N**

Longitude: **91°46'49.26878"W**

Mapping Angle: **1°07'58"**

Combination Scale Factor: **0.99993461**

Monument Type: Berntsen Top Security Rod Monument with a 2-1/2" dia. domed survey cap and permanent magnet encased in a 5"dia. PVC pipe with a NGS style aluminum access cover



This document was prepared by DCI for use by Jefferson Co., Iowa.