

Jefferson County, Iowa  
Iowa South Zone (1402)  
Horiz. Datum: NAD83(1996)  
Vert. Datum: NAVD 1988  
US Survey Feet  
2005

Point Name: 63

**Designation:** 93-63 Wapello Co GPS Control Pt. (Set by ASI in 1993)

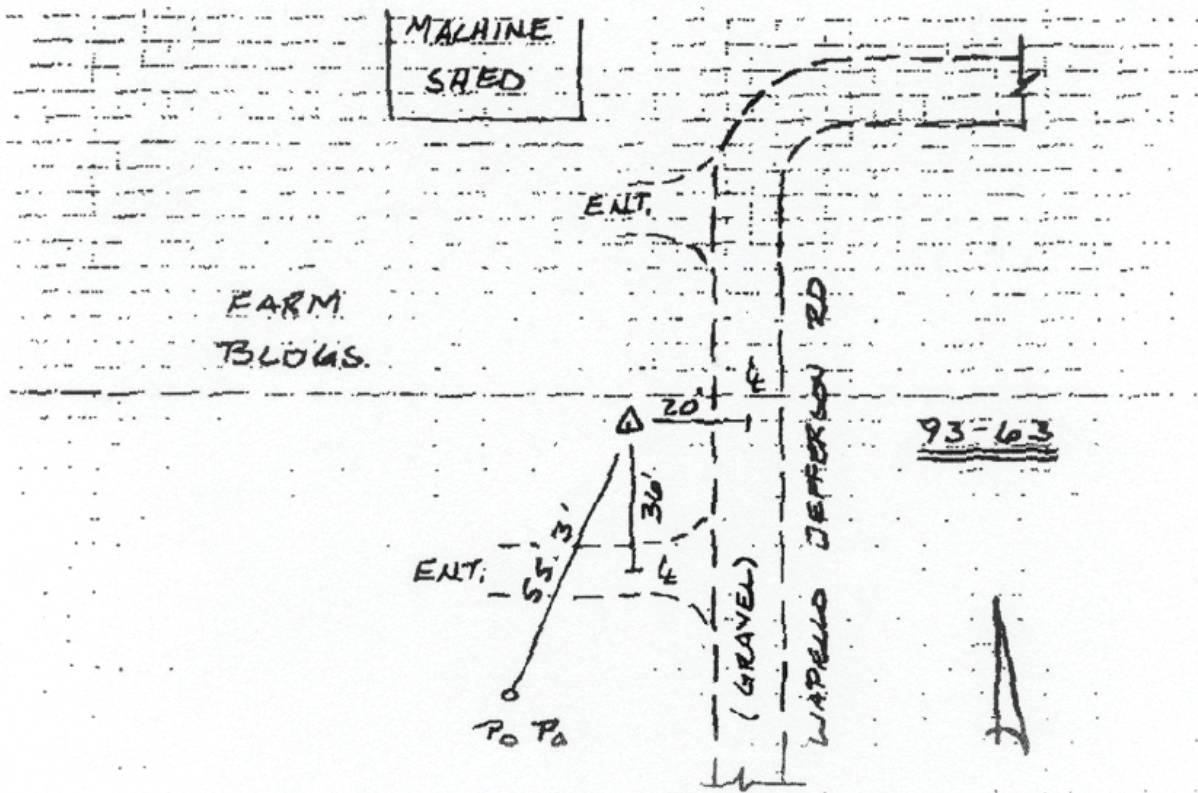
Northing: 361555.15sft Easting: 2005031.04sft

Orthometric Height: 762.86sft Ellipsoid Height: 655.38sft Geoid03

Latitude: 40°59'05.22429"N Longitude: 92°10'45.43648"W

Mapping Angle: 0°52'12" Combination Scale Factor: 0.99992417

**Monument Type:** 5/8" diameter driven aluminum rod with 2 1/2" diameter aluminum survey cap and permanent magnet, encased in 5" dia. PVC pipe with aluminum access cover. Approx. 6" below the ground surface.



This document was prepared by DCI for use by Jefferson Co., Iowa.