

Jefferson County, Iowa  
Iowa South Zone (1402)  
Horiz. Datum: NAD83(1996)  
Vert. Datum: NAVD 1988  
US Survey Feet  
2005

Point Name: 64

**Designation:** 93-64 Wapello Co GPS Control Pt. (Set by ASI in 1993)

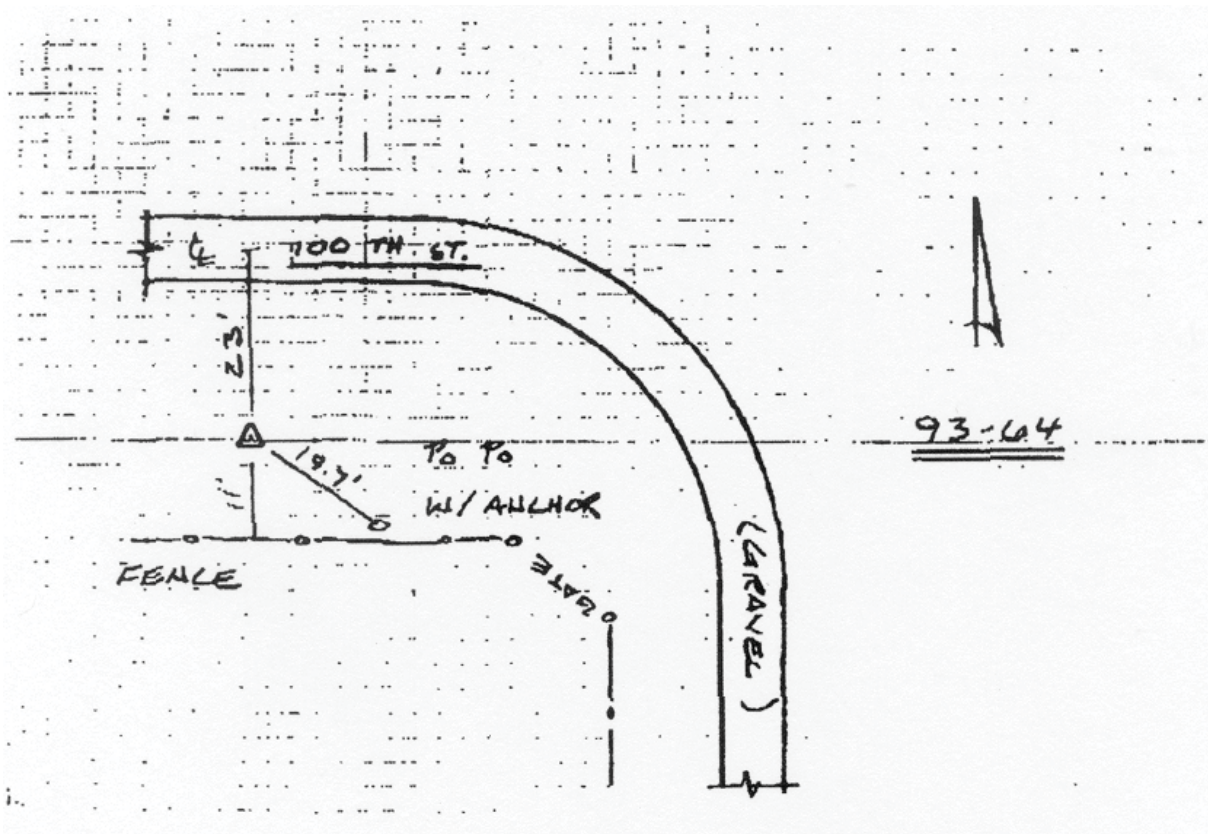
Northing: 378570.47sft Easting: 2004616.73sft

Orthometric Height: 752.94sft Ellipsoid Height: 645.64sft Geoid03

Latitude: 41°01'53.39652"N Longitude: 92°10'47.47109"W

Mapping Angle: 0°52'10" Combination Scale Factor: 0.99992191

**Monument Type:** 5/8" diameter driven aluminum rod with 2 1/2" diameter aluminum survey cap and permanent magnet, encased in 5" dia. PVC pipe with aluminum access cover. Approx. 6" below the ground surface.



*This document was prepared by DCI for use by Jefferson Co., Iowa.*