

Jefferson County, Iowa
Iowa South Zone (1402)
Horiz. Datum: NAD83(1996)
Vert. Datum: NAVD 1988
US Survey Feet
2005

Point Name: **67**

Designation: 93-67 Wapello Co GPS Control Pt. (Set by ASI in 1993)

Northing: **426296.44sft** Easting: **2003840.00sft**

Orthometric Height: **808.03sft** Ellipsoid Height: **701.09sft** **Geoid03**

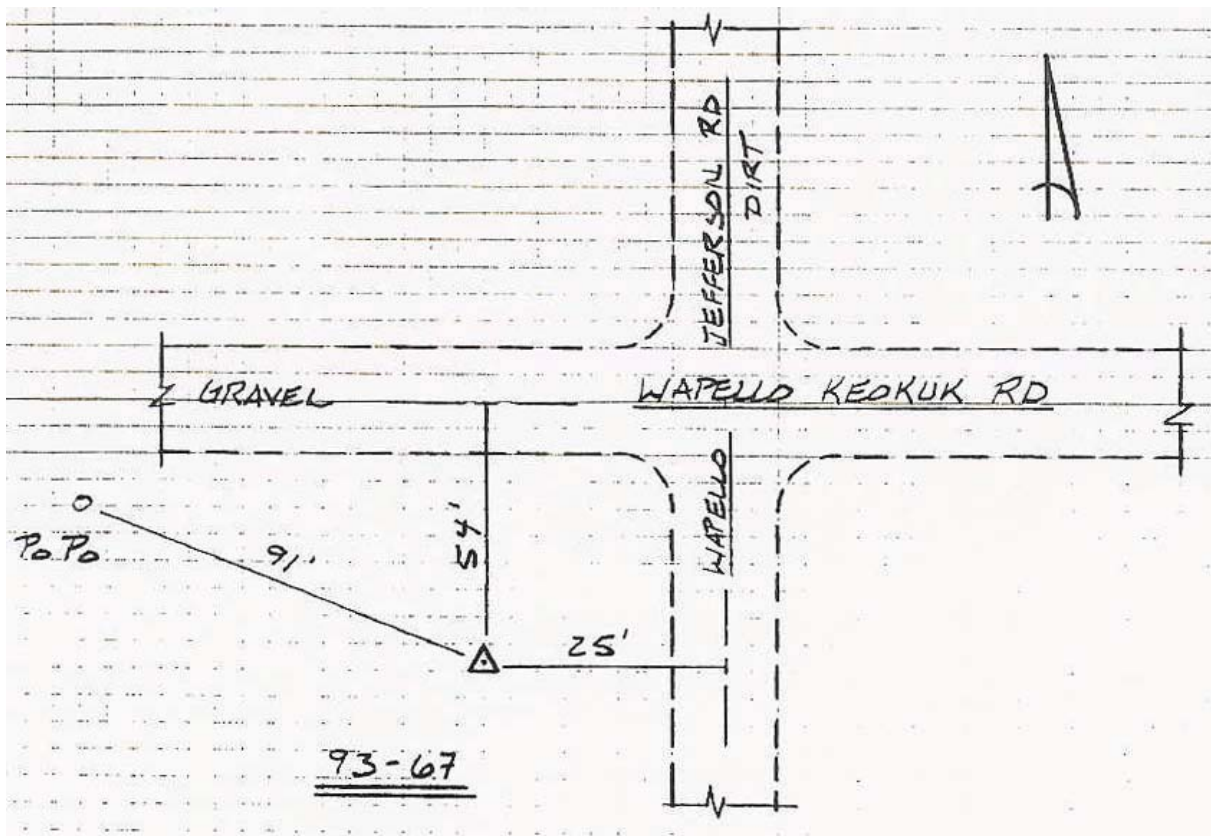
Latitude: **41°09'45.03671"N**

Longitude: **92°10'48.15520"W**

Mapping Angle: **0°52'10"**

Combination Scale Factor: **0.99991514**

Monument Type: 5/8" diameter driven aluminum rod with 2 1/2" diameter aluminum survey cap and permanent magnet, encased in 5" dia. PVC pipe with aluminum access cover. Approx. 6" below the ground surface.



This document was prepared by DCI for use by Jefferson Co., Iowa.