

**Johnson County, Iowa**  
Iowa South Zone (1402)  
Horiz. Datum: NAD83(1996)  
Vert. Datum: NAVD 1988  
US Survey Feet  
**2006**

Point Name: **2**

**Designation:** 92-02 Johnson County GPS Control Point (Set by ASI in 1992)

Northing: **683020.71sft** Easting: **2110729.12sft**

Orthometric Height: **806.32sft** Ellipsoid Height: **700.61sft** **Geoid03**

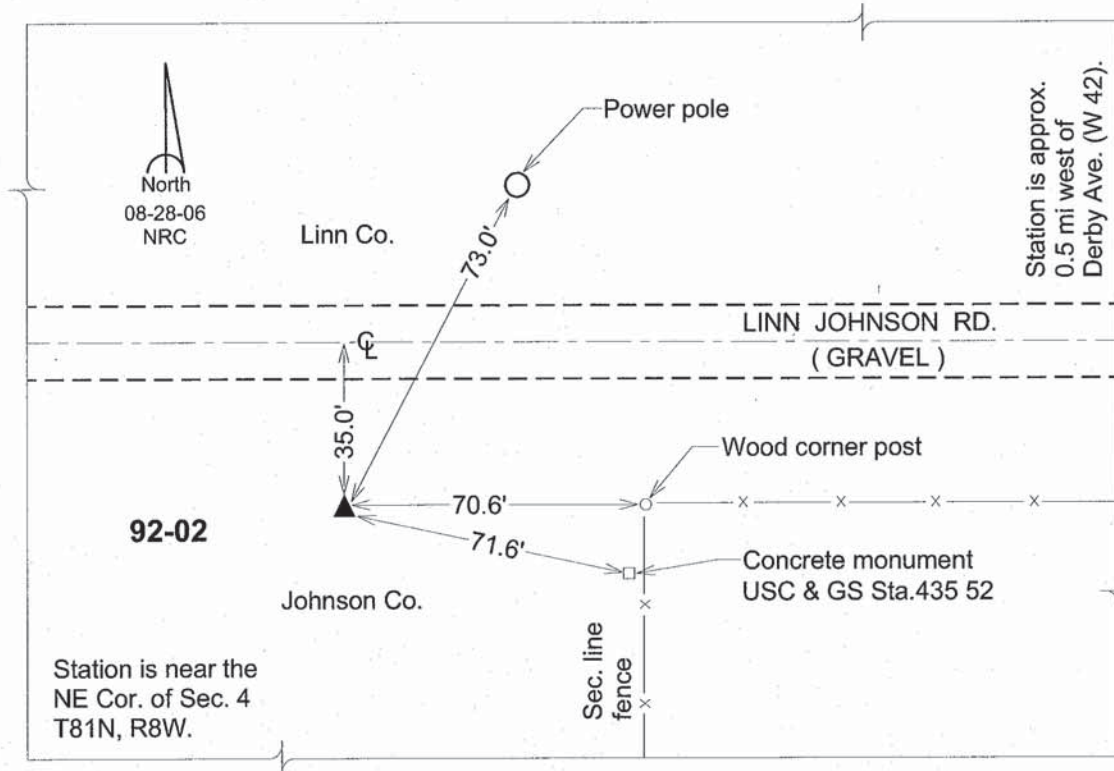
Latitude: **41°51'42.60935"N**

Longitude: **91°46'24.25515"W**

Mapping Angle: **1°08'14"**

Combination Scale Factor: **0.99998145**

**Monument Type:** 5/8" dia. driven aluminum rod with a 2-1/2" dia. aluminum cap and permanent magnet encased in a 6" dia. PVC pipe with an aluminum access cover.



*This document was prepared by DCI and GBC for use by Johnson County, Iowa.*