

Johnson County, Iowa
 Iowa South Zone (1402)
 Horiz. Datum: NAD83(1996)
 Vert. Datum: NAVD 1988
 US Survey Feet
2006

Point Name: **3**

Designation: 92-03 Johnson County GPS Control Point (Set by ASI in 1992)

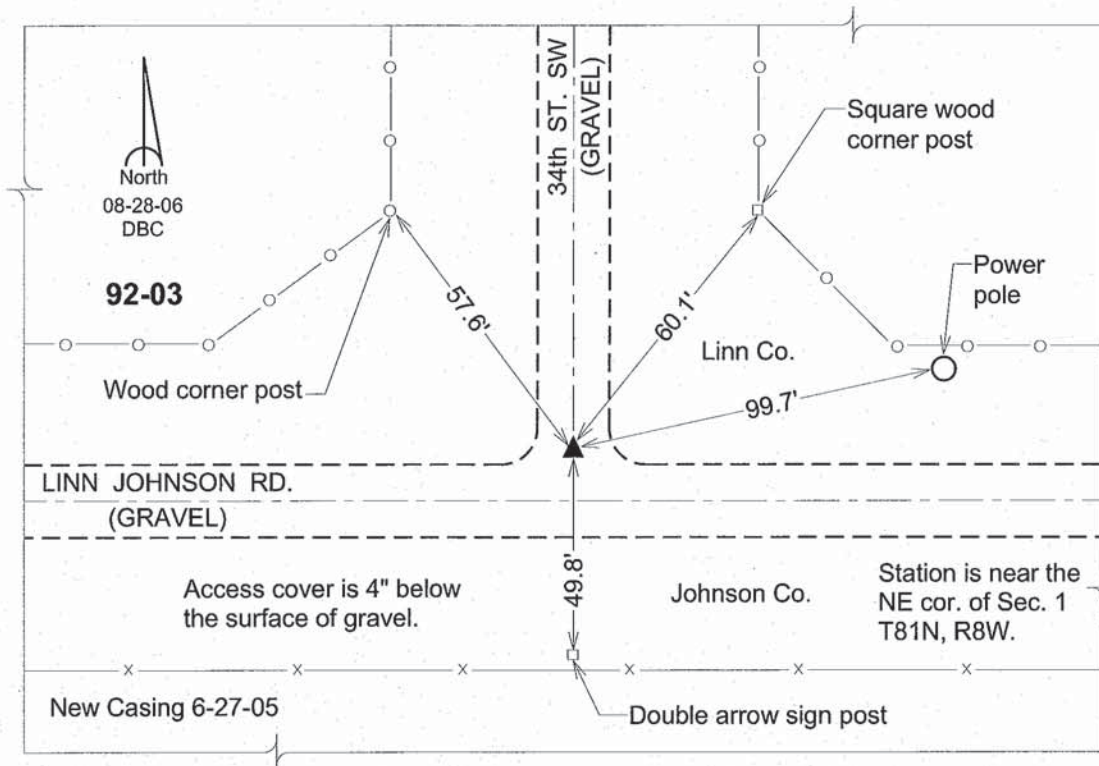
Northing: **683435.61**sft Easting: **2126761.84**sft

Orthometric Height: **795.26**sft Ellipsoid Height: **689.24**sft **Geoid03**

Latitude: **41°51'43.51002"N** Longitude: **91°42'52.30946"W**

Mapping Angle: **1°10'34"** Combination Scale Factor: **0.99998205**

Monument Type: 5/8" dia. driven aluminum rod with a 2-1/2" dia. aluminum cap and permanent magnet encased in a 6" dia. PVC pipe with an aluminum access cover.



This document was prepared by DCI and GBC for use by Johnson County, Iowa.