

**Johnson County, Iowa**  
 Iowa South Zone (1402)  
 Horiz. Datum: NAD83(1996)  
 Vert. Datum: NAVD 1988  
 US Survey Feet  
**2006**

Point Name: **4**

**Designation:** 92-04 Johnson County GPS Control Point (Set by ASI in 1992)

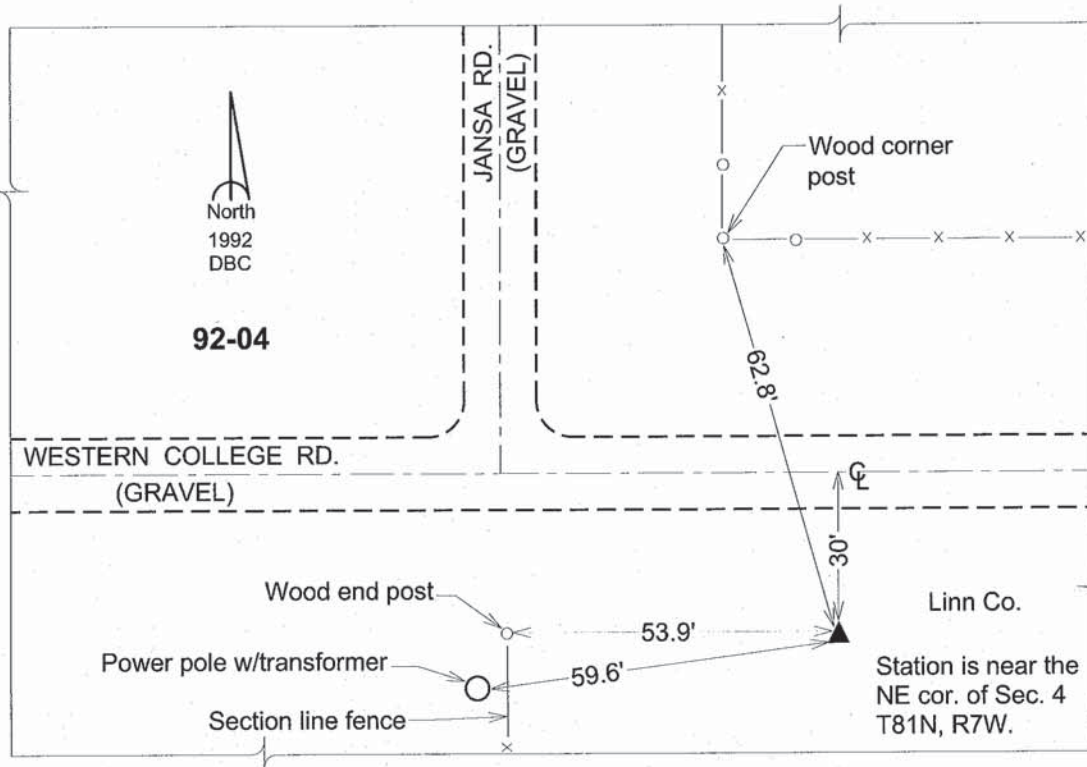
Northing: **684753.98sft**    Easting: **2142703.59sft**

Orthometric Height: **846.15sft**    Ellipsoid Height: **739.93sft**    **Geoid03**

Latitude: **41°51'53.24582"N**    Longitude: **91°39'21.31107"W**

Mapping Angle: **1°12'53"**    Combination Scale Factor: **0.99998017**

**Monument Type:** 5/8" dia. driven aluminum rod with a 2-1/2" dia. aluminum cap and permanent magnet encased in a 6" dia. PVC pipe with an aluminum access cover.



*This document was prepared by DCI and GBC for use by Johnson County, Iowa.*