

Johnson County, Iowa
 Iowa South Zone (1402)
 Horiz. Datum: NAD83(1996)
 Vert. Datum: NAVD 1988
 US Survey Feet
2006

Point Name: **5**

Designation: 92-05 Johnson County GPS Control Point (Set by ASI in 1992)

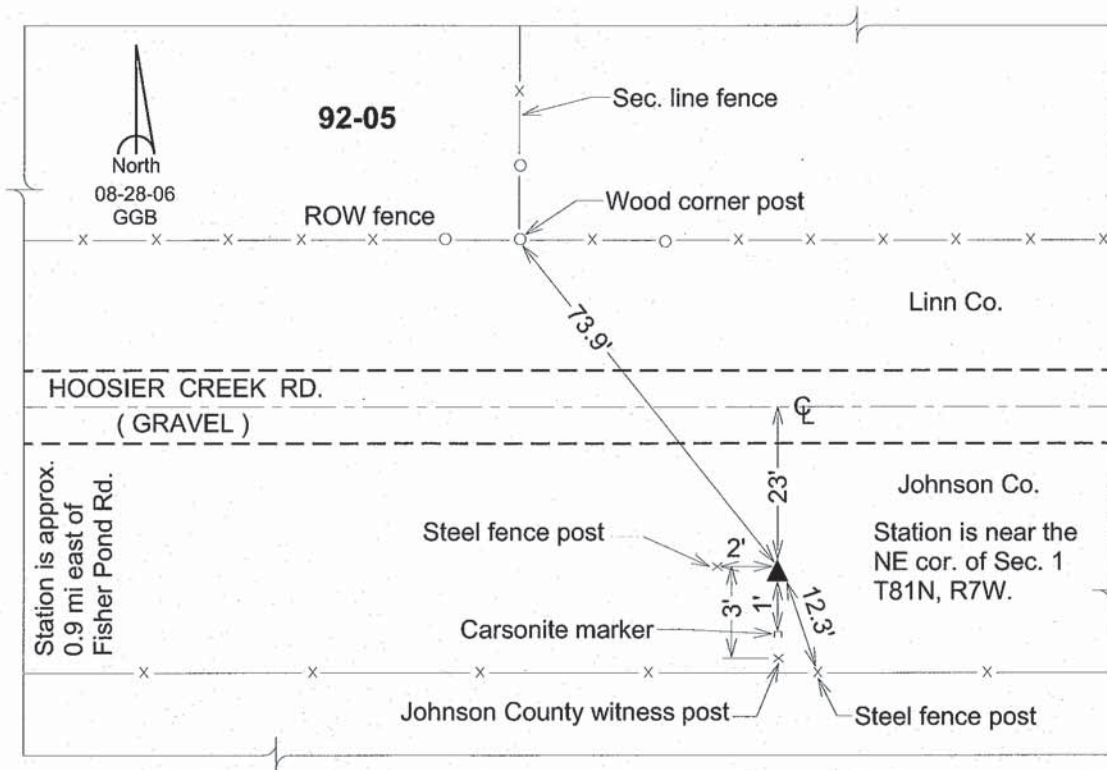
Northing: **683588.26sft** Easting: **2157951.80sft**

Orthometric Height: **793.04sft** Ellipsoid Height: **686.67sft** **Geoid03**

Latitude: **41°51'38.49064"N** Longitude: **91°36'00.17625"W**

Mapping Angle: **1°15'05"** Combination Scale Factor: **0.99998189**

Monument Type: 5/8" dia. driven aluminum rod with a 2-1/2" dia. aluminum cap and permanent magnet encased in a 6" dia. PVC pipe with an aluminum access cover.



This document was prepared by DCI and GBC for use by Johnson County, Iowa.