

Johnson County, Iowa
Iowa South Zone (1402)
Horiz. Datum: NAD83(1996)
Vert. Datum: NAVD 1988
US Survey Feet
2006

Point Name: **6**

Designation: 92-06 Johnson County GPS Control Point (Set by ASI in 1992)

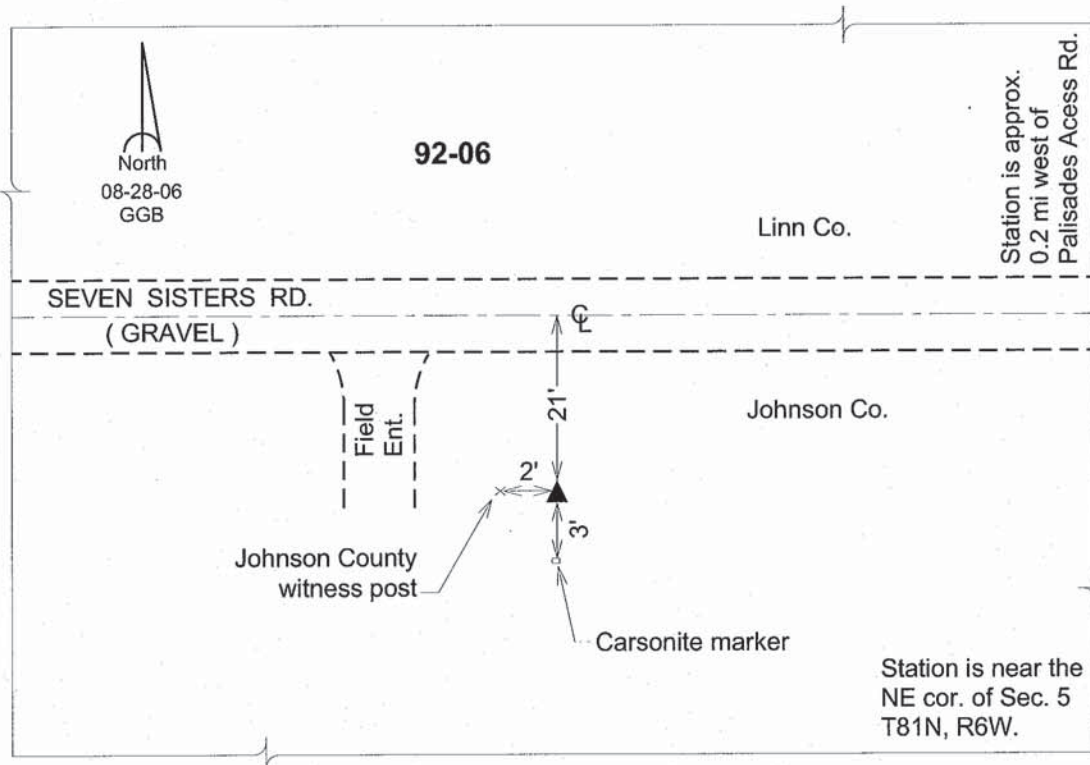
Northing: **683757.84sft** Easting: **2174706.01sft**

Orthometric Height: **825.33sft** Ellipsoid Height: **718.85sft** **Geoid03**

Latitude: **41°51'36.49199"N** Longitude: **91°32'18.77338"W**

Mapping Angle: **1°17'31"** Combination Scale Factor: **0.99998024**

Monument Type: 5/8" dia. driven aluminum rod with a 2-1/2" dia. aluminum cap and permanent magnet encased in a 6" dia. PVC pipe with an aluminum access cover.



This document was prepared by DCI and GBC for use by Johnson County, Iowa.