

Johnson County, Iowa
Iowa South Zone (1402)
Horiz. Datum: NAD83(1996)
Vert. Datum: NAVD 1988
US Survey Feet
2006

Point Name: **13**

Designation: 92-13 Johnson County GPS Control Point (Set by ASI in 1992)

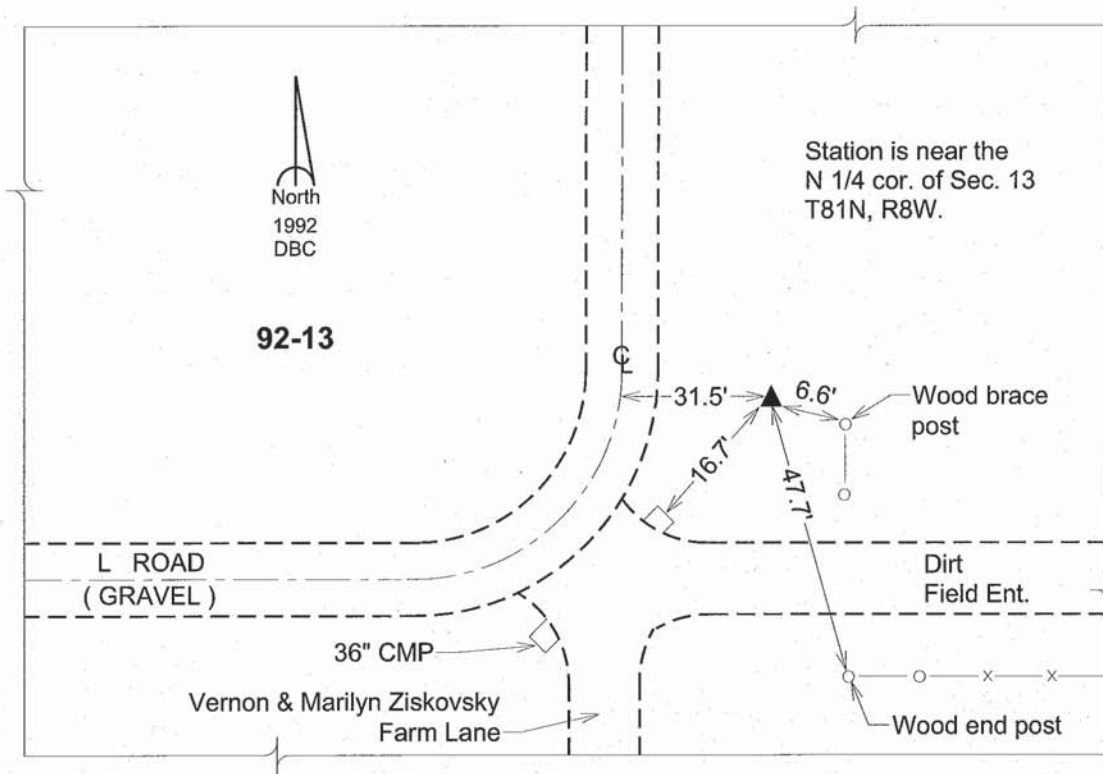
Northing: **672774.46sft** Easting: **2124340.71sft**

Orthometric Height: **746.86sft** Ellipsoid Height: **640.75sft** **Geoid03**

Latitude: **41°49'58.69967"N** Longitude: **91°43'27.17510"W**

Mapping Angle: **1°10'11"** Combination Scale Factor: **0.99997862**

Monument Type: 5/8" dia. driven aluminum rod with a 2-1/2" dia. aluminum cap and permanent magnet encased in a 6" dia. PVC pipe with an aluminum access cover.



This document was prepared by DCI and GBC for use by Johnson County, Iowa.