

**Johnson County, Iowa**  
Iowa South Zone (1402)  
Horiz. Datum: NAD83(1996)  
Vert. Datum: NAVD 1988  
US Survey Feet  
**2006**

Point Name: **14**

**Designation:** 92-14 Johnson County GPS Control Point (Set by ASI in 1992)

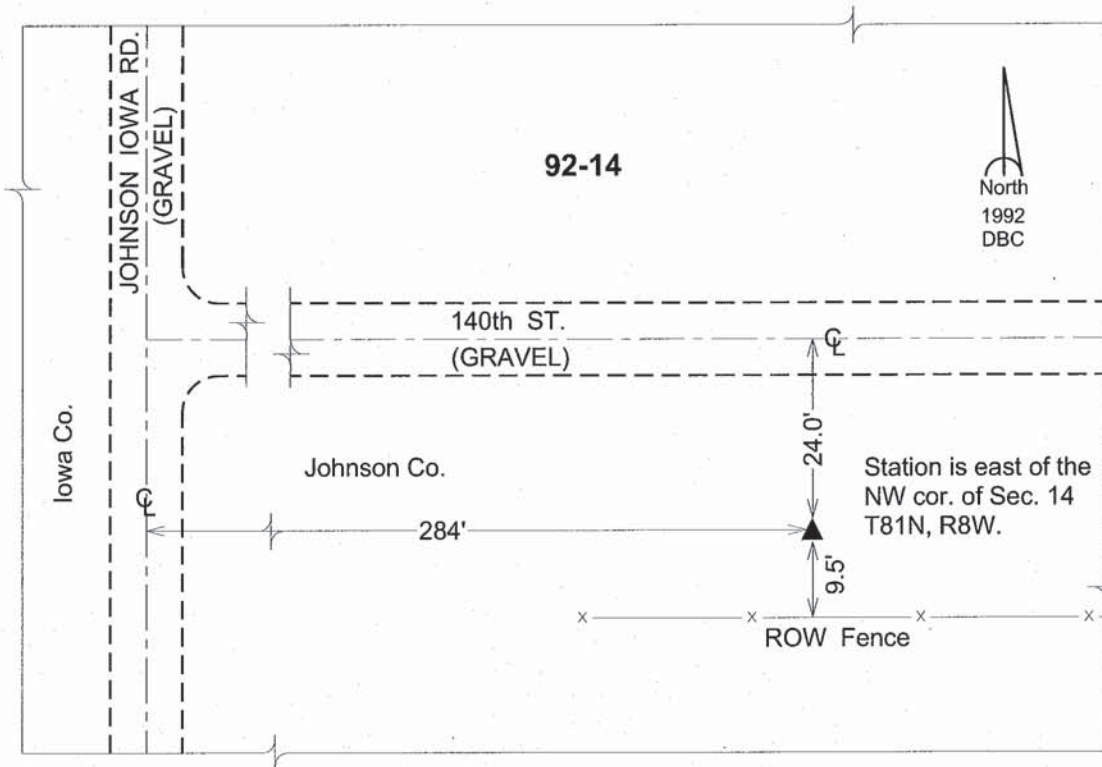
Northing: **672099.54sft**    Easting: **2095512.89sft**

Orthometric Height: **861.38sft**    Ellipsoid Height: **755.79sft**    **Geoid03**

Latitude: **41°49'57.67398"N**    Longitude: **91°49'48.07638"W**

Mapping Angle: **1°06'00"**    Combination Scale Factor: **0.99997307**

**Monument Type:** 5/8" dia. driven aluminum rod with a 2-1/2" dia. aluminum cap and permanent magnet encased in a 6" dia. PVC pipe with an aluminum access cover.



*This document was prepared by DCI and GBC for use by Johnson County, Iowa.*