

Johnson County, Iowa
Iowa South Zone (1402)
Horiz. Datum: NAD83(1996)
Vert. Datum: NAVD 1988
US Survey Feet
2006

Point Name: **16**

Designation: 92-16 Johnson County GPS Control Point (Set by ASI in 1992)

Northing: **664071.20**sft Easting: **2121807.18**sft

Orthometric Height: **739.19**sft Ellipsoid Height: **633.03**sft **Geoid03**

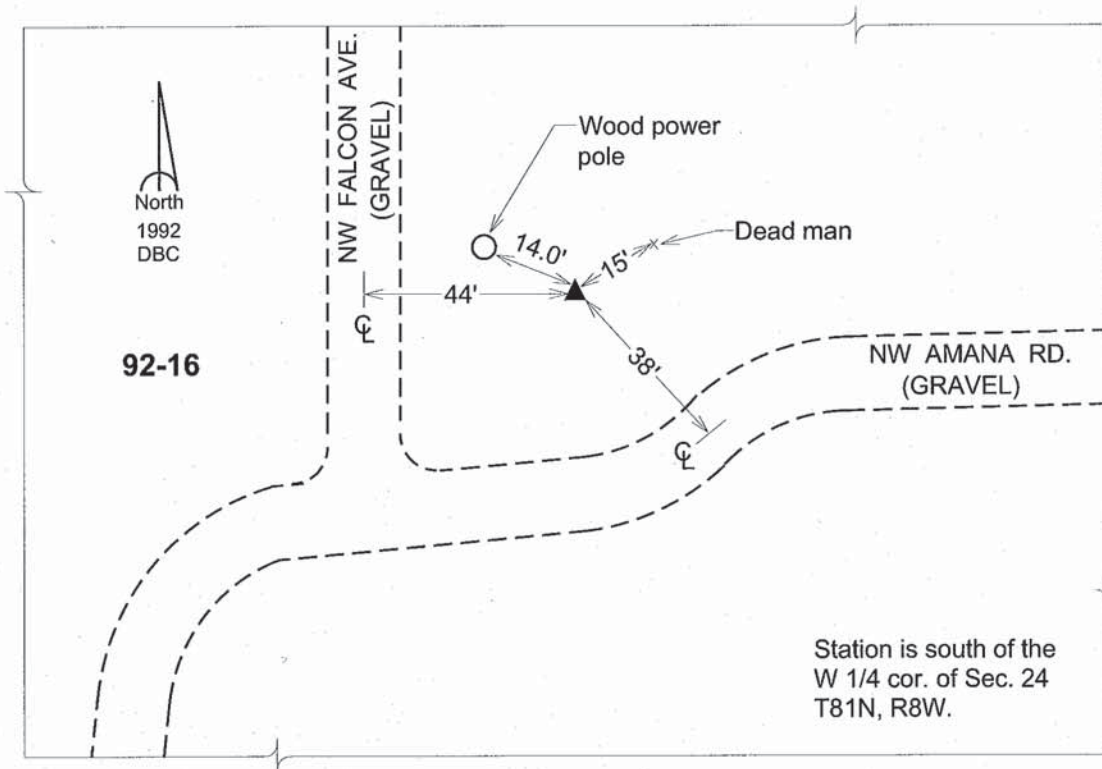
Latitude: **41°48'33.24625"N**

Longitude: **91°44'02.96861"W**

Mapping Angle: **1°09'47"**

Combination Scale Factor: **0.99997450**

Monument Type: 5/8" dia. driven aluminum rod with a 2-1/2" dia. aluminum cap and permanent magnet encased in a 6" dia. PVC pipe with an aluminum access cover.



This document was prepared by DCI and GBC for use by Johnson County, Iowa.