

Johnson County, Iowa
 Iowa South Zone (1402)
 Horiz. Datum: NAD83(1996)
 Vert. Datum: NAVD 1988
 US Survey Feet
2006

Point Name: **20**

Designation: 92-20 Johnson County GPS Control Point (Set by ASI in 1992)

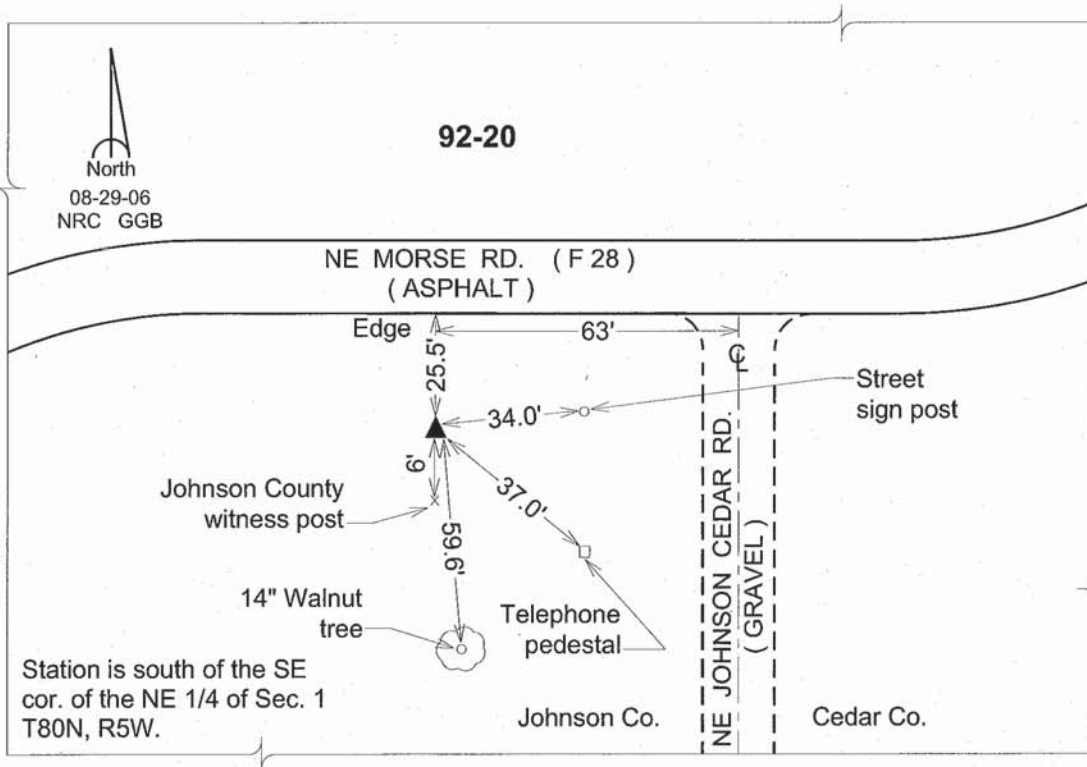
Northing: **651628.71sft** Easting: **2222471.93sft**

Orthometric Height: **825.17sft** Ellipsoid Height: **718.38sft** **Geoid03**

Latitude: **41°46'08.06318"N** Longitude: **91°21'58.15162"W**

Mapping Angle: **1°24'20"** Combination Scale Factor: **0.99996319**

Monument Type: 5/8" dia. driven aluminum rod with a 2-1/2" dia. aluminum cap and permanent magnet encased in a 6" dia. PVC pipe with an aluminum access cover.



This document was prepared by DCI and GBC for use by Johnson County, Iowa.