

**Johnson County, Iowa**  
Iowa South Zone (1402)  
Horiz. Datum: NAD83(1996)  
Vert. Datum: NAVD 1988  
US Survey Feet  
**2006**

Point Name: **21**

**Designation:** 92-21 Johnson County GPS Control Point (Set by ASI in 1992)

Northing: **652071.40**sft    Easting: **2190677.78**sft

Orthometric Height: **823.71**sft    Ellipsoid Height: **717.00**sft    **Geoid03**

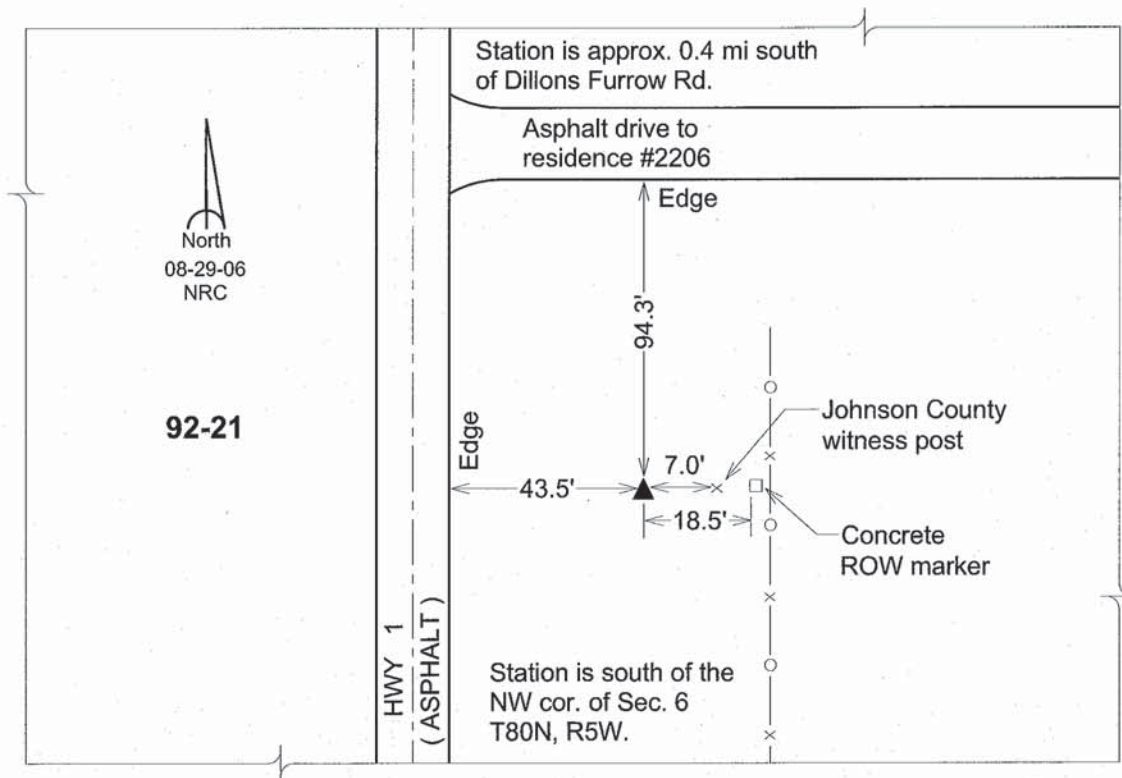
Latitude: **41°46'19.92989"N**

Longitude: **91°28'57.47406"W**

Mapping Angle: **1°19'44"**

Combination Scale Factor: **0.99996383**

**Monument Type:** 5/8" dia. driven aluminum rod with a 2-1/2" dia. aluminum cap and permanent magnet encased in a 6" dia. PVC pipe with an aluminum access cover.



*This document was prepared by DCI and GBC for use by Johnson County, Iowa.*