

Johnson County, Iowa
Iowa South Zone (1402)
Horiz. Datum: NAD83(1996)
Vert. Datum: NAVD 1988
US Survey Feet
2006

Point Name: **23**

Designation: 92-23 Johnson County GPS Control Point (Set by ASI in 1992)

Northing: **648983.95sft** Easting: **2127367.32sft**

Orthometric Height: **720.96sft** Ellipsoid Height: **614.60sft** **Geoid03**

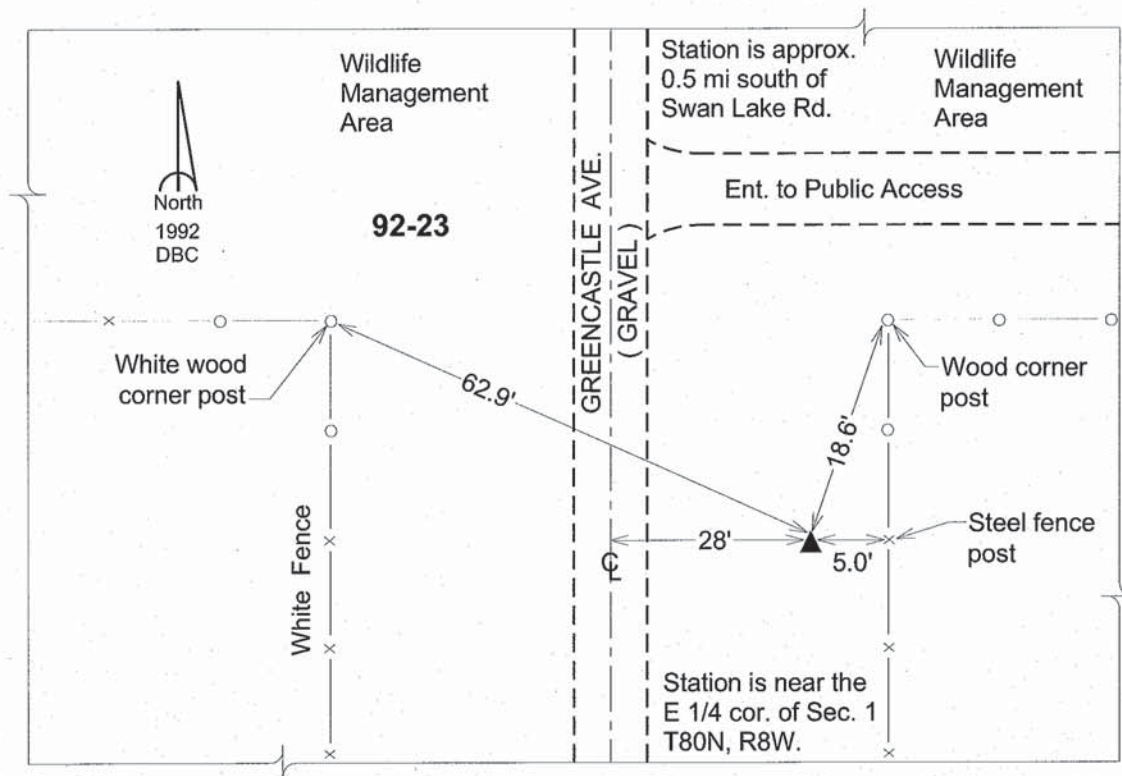
Latitude: **41°46'03.10527"N**

Longitude: **91°42'53.65246"W**

Mapping Angle: **1°10'33"**

Combination Scale Factor: **0.99996791**

Monument Type: 5/8" dia. driven aluminum rod with a 2-1/2" dia. aluminum cap and permanent magnet encased in a 6" dia. PVC pipe with an aluminum access cover.



This document was prepared by DCI and GBC for use by Johnson County, Iowa.