

Johnson County, Iowa
Iowa South Zone (1402)
Horiz. Datum: NAD83(1996)
Vert. Datum: NAVD 1988
US Survey Feet
2006

Point Name: **28**

Designation: 92-28 Johnson County GPS Control Point (Set by ASI in 1992)

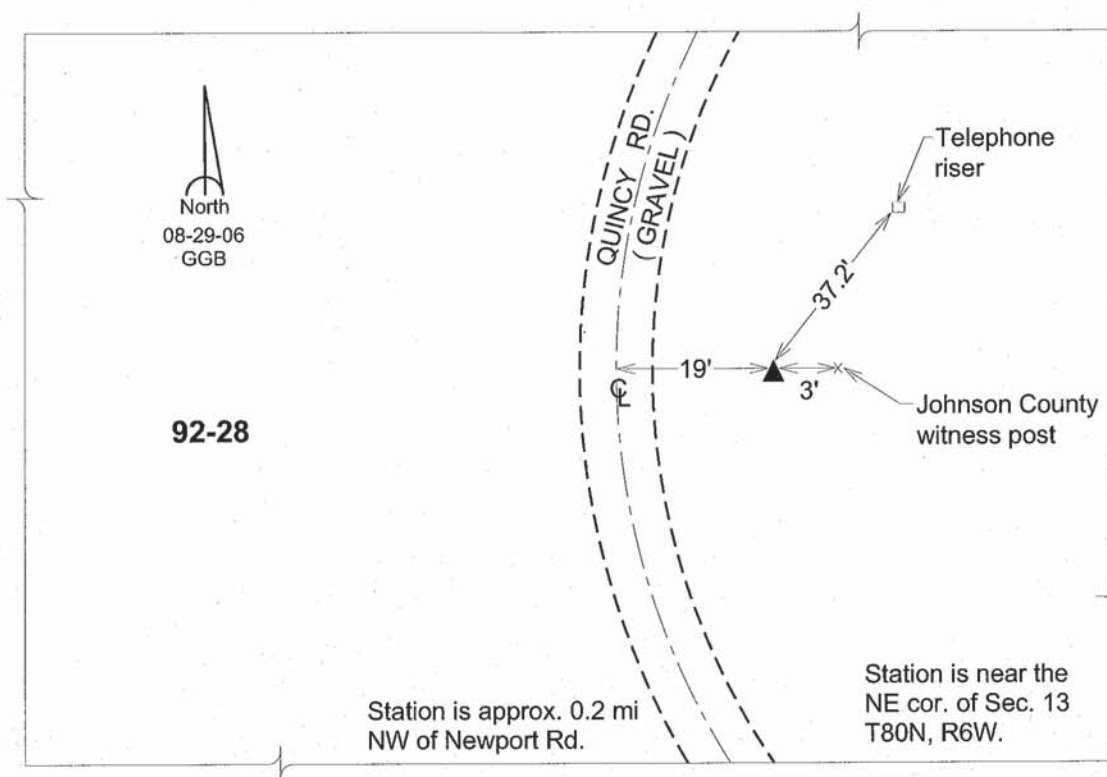
Northing: **642186.72sft** Easting: **2190838.75sft**

Orthometric Height: **844.21sft** Ellipsoid Height: **737.45sft** **Geoid03**

Latitude: **41°44'42.26501"N** Longitude: **91°28'58.37521"W**

Mapping Angle: **1°19'43"** Combination Scale Factor: **0.99995824**

Monument Type: 5/8" dia. driven aluminum rod with a 2-1/2" dia. aluminum cap and permanent magnet encased in a 6" dia. PVC pipe with an aluminum access cover.



This document was prepared by DCI and GBC for use by Johnson County, Iowa.