

Johnson County, Iowa
Iowa South Zone (1402)
Horiz. Datum: NAD83(1996)
Vert. Datum: NAVD 1988
US Survey Feet
2006

Point Name: **33**

Designation: 92-33 Johnson County GPS Control Point (Set by ASI in 1992)

Northing: **629762.07**sft Easting: **2127223.76**sft

Orthometric Height: **726.32**sft Ellipsoid Height: **619.81**sft **Geoid03**

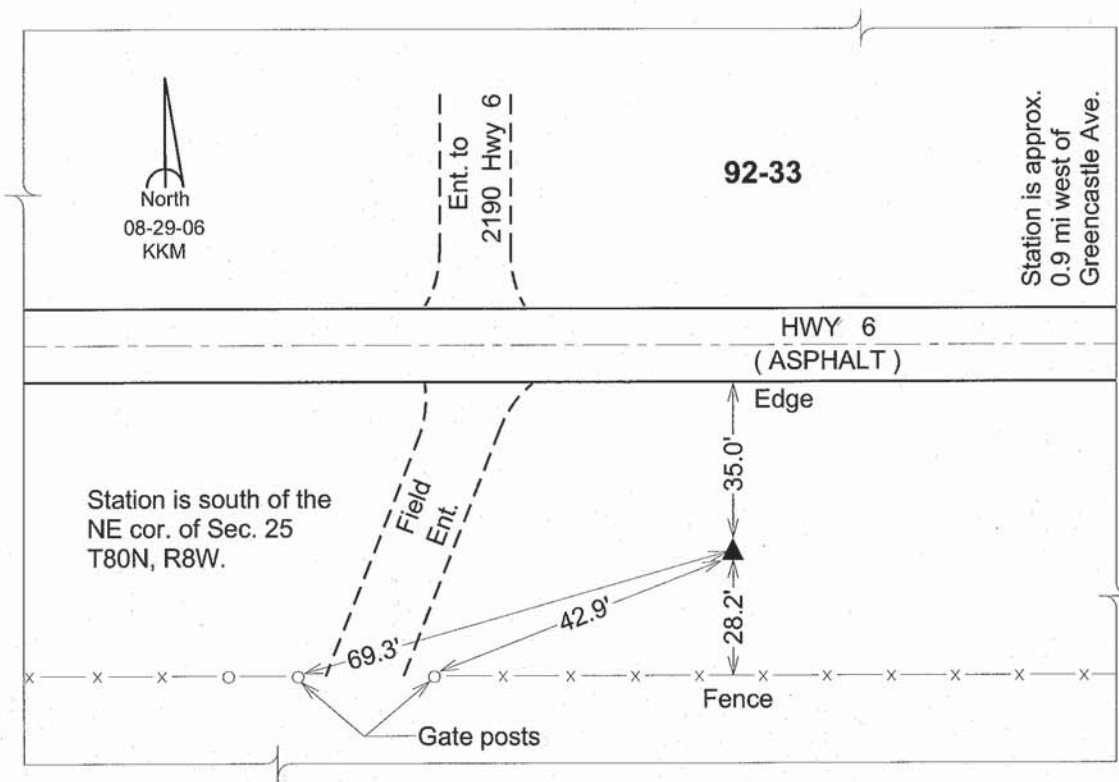
Latitude: **41°42'53.27327"N**

Longitude: **91°43'00.74607"W**

Mapping Angle: **1°10'28"**

Combination Scale Factor: **0.99995898**

Monument Type: 5/8" dia. driven aluminum rod with a 2-1/2" dia. aluminum cap and permanent magnet encased in a 6" dia. PVC pipe with an aluminum access cover.



This document was prepared by DCI and GBC for use by Johnson County, Iowa.