

**Johnson County, Iowa**  
Iowa South Zone (1402)  
Horiz. Datum: NAD83(1996)  
Vert. Datum: NAVD 1988  
US Survey Feet  
**2006**

Point Name: **35**

**Designation:** 92-35 Johnson County GPS Control Point (Set by ASI in 1992)

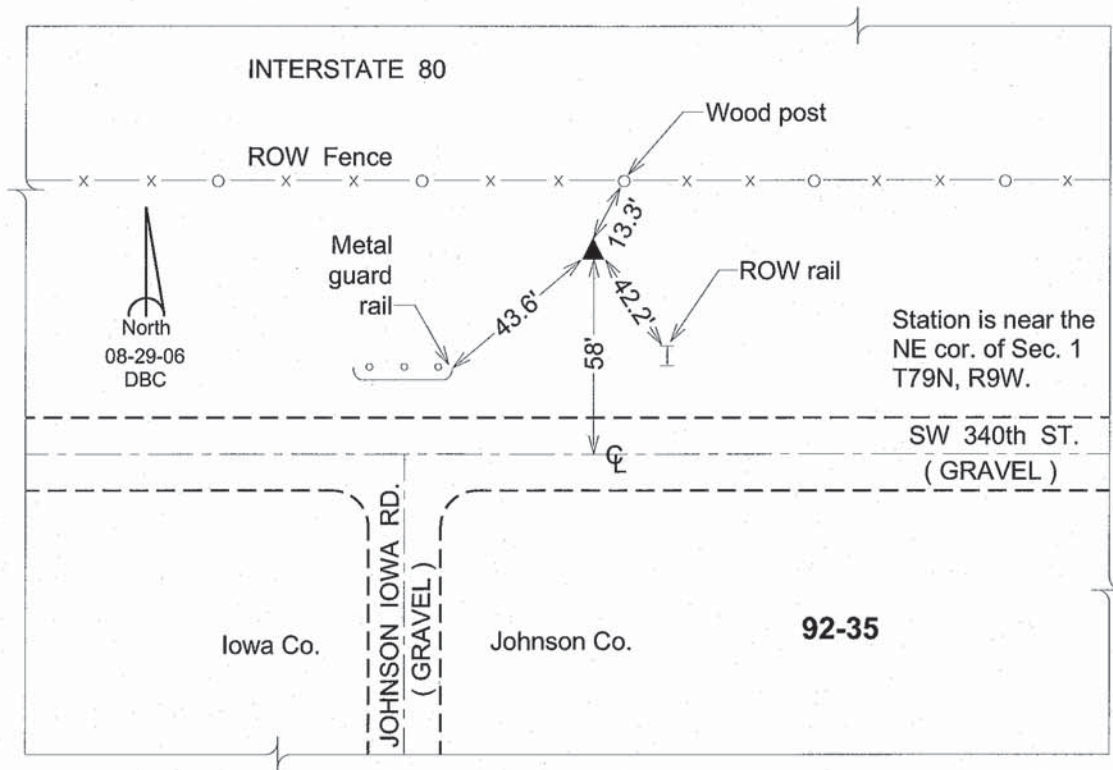
Northing: **618950.81sft**    Easting: **2095446.35sft**

Orthometric Height: **824.65sft**    Ellipsoid Height: **718.43sft**    **Geoid03**

Latitude: **41°41'12.70789"N**    Longitude: **91°50'02.40114"W**

Mapping Angle: **1°05'51"**    Combination Scale Factor: **0.99995002**

**Monument Type:** 5/8" dia. driven aluminum rod with a 2-1/2" dia. aluminum cap and permanent magnet encased in a 6" dia. PVC pipe with an aluminum access cover.



*This document was prepared by DCI and GBC for use by Johnson County, Iowa.*