

**Johnson County, Iowa**  
 Iowa South Zone (1402)  
 Horiz. Datum: NAD83(1996)  
 Vert. Datum: NAVD 1988  
 US Survey Feet  
**2006**

Point Name: **36**

**Designation:** 92-36 Johnson County GPS Control Point (Set by ASI in 1992)

Northing: **619797.63sft**    Easting: **2127533.83sft**

Orthometric Height: **732.66sft**    Ellipsoid Height: **626.05sft**    **Geoid03**

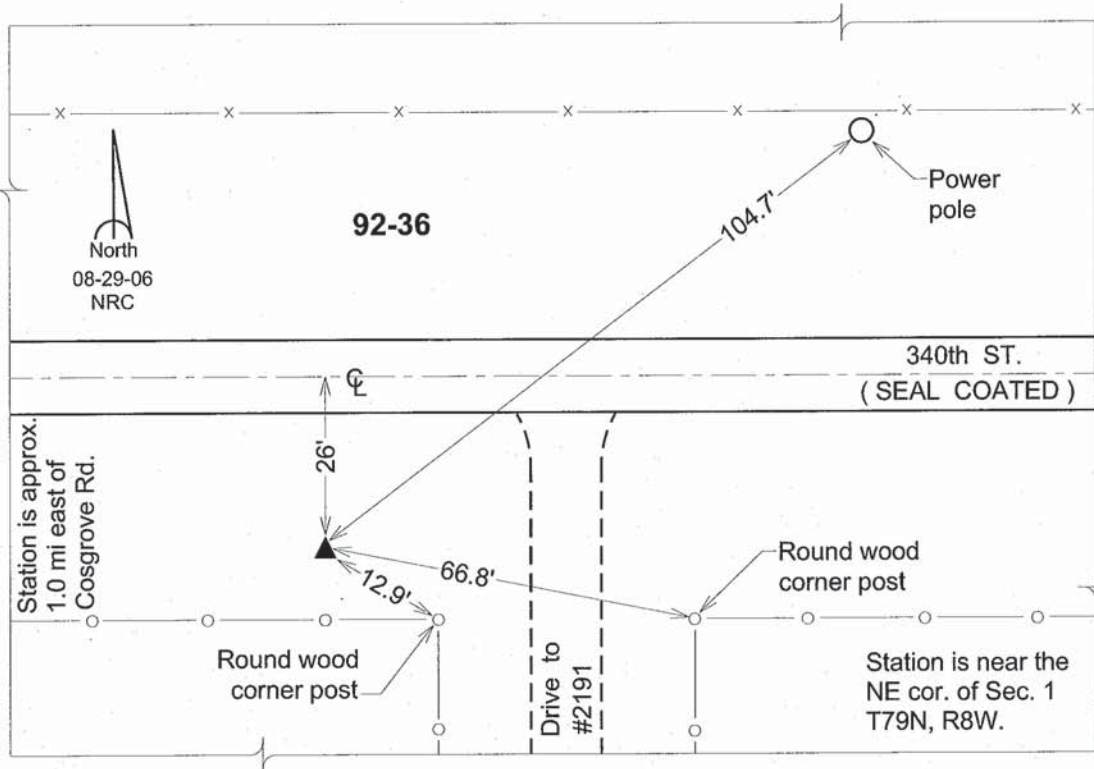
Latitude: **41°41'14.78693"N**

Longitude: **91°42'59.35224"W**

Mapping Angle: **1°10'29"**

Combination Scale Factor: **0.99995451**

**Monument Type:** 5/8" dia. driven aluminum rod with a 2-1/2" dia. aluminum cap and permanent magnet encased in a 6" dia. PVC pipe with an aluminum access cover.



*This document was prepared by DCI and GBC for use by Johnson County, Iowa.*