

**Johnson County, Iowa**  
Iowa South Zone (1402)  
Horiz. Datum: NAD83(1996)  
Vert. Datum: NAVD 1988  
US Survey Feet  
**2006**

Point Name: **38**

**Designation:** 92-38 Johnson County GPS Control Point (Set by ASI in 1992)

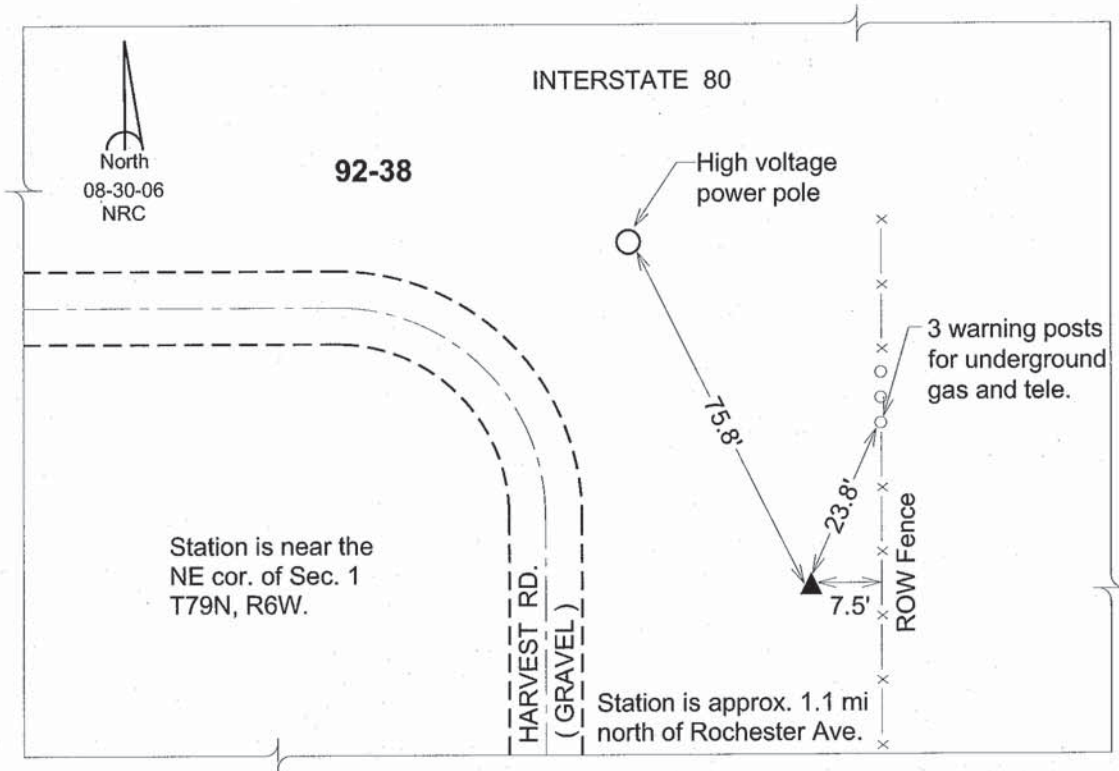
Northing: **620152.73sft** Easting: **2191375.43sft**

Orthometric Height: **746.98sft** Ellipsoid Height: **640.07sft** **Geoid03**

Latitude: **41°41'04.51557"N** Longitude: **91°28'58.03749"W**

Mapping Angle: **1°19'43"** Combination Scale Factor: **0.99995342**

**Monument Type:** 5/8" dia. driven aluminum rod with a 2-1/2" dia. aluminum cap and permanent magnet encased in a 6" dia. PVC pipe with an aluminum access cover.



*This document was prepared by DCI and GBC for use by Johnson County, Iowa.*