

Johnson County, Iowa
 Iowa South Zone (1402)
 Horiz. Datum: NAD83(1996)
 Vert. Datum: NAVD 1988
 US Survey Feet
2006

Point Name: **39**

Designation: 92-39 Johnson County GPS Control Point (Set by ASI in 1992)

Northing: **621214.71**sft Easting: **2223323.57**sft

Orthometric Height: **758.34**sft Ellipsoid Height: **651.38**sft **Geoid03**

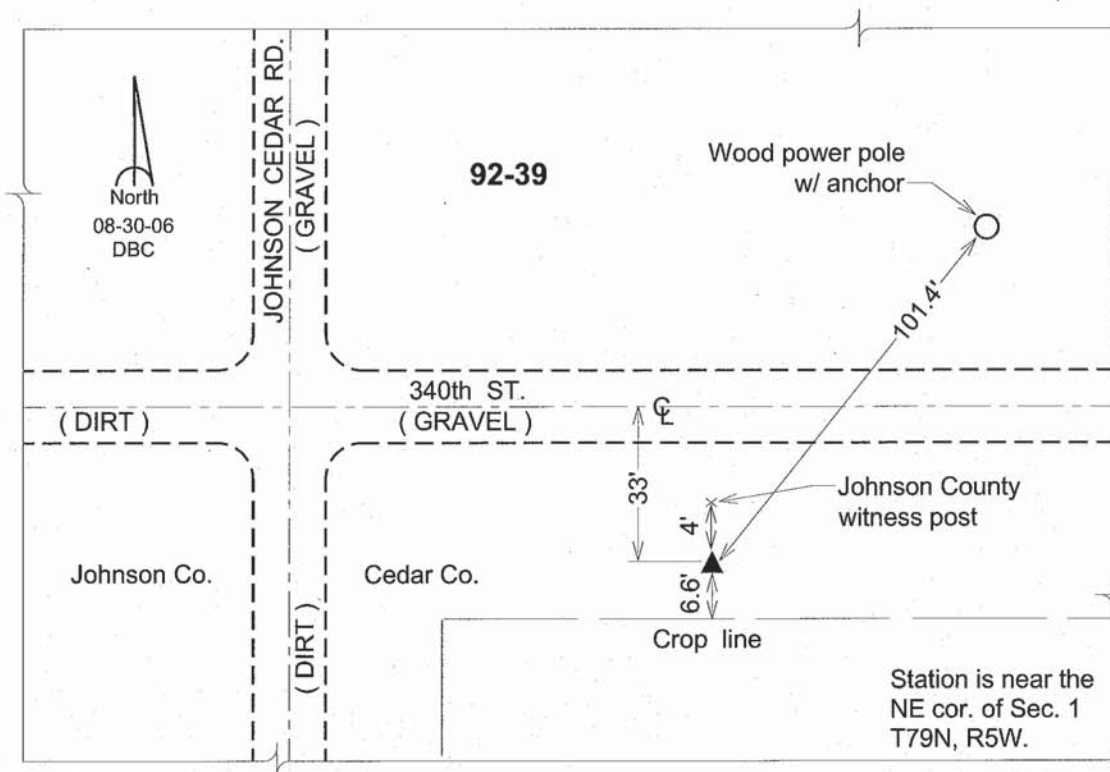
Latitude: **41°41'07.47306"N**

Longitude: **91°21'56.76313"W**

Mapping Angle: **1°24'21"**

Combination Scale Factor: **0.99995300**

Monument Type: 5/8" dia. driven aluminum rod with a 2-1/2" dia. aluminum cap and permanent magnet encased in a 6" dia. PVC pipe with an aluminum access cover.



This document was prepared by DCI and GBC for use by Johnson County, Iowa.