

**Johnson County, Iowa**  
 Iowa South Zone (1402)  
 Horiz. Datum: NAD83(1996)  
 Vert. Datum: NAVD 1988  
 US Survey Feet  
**2006**

Point Name: **41**

**Designation:** 92-41 Johnson County GPS Control Point (Set by ASI in 1992)

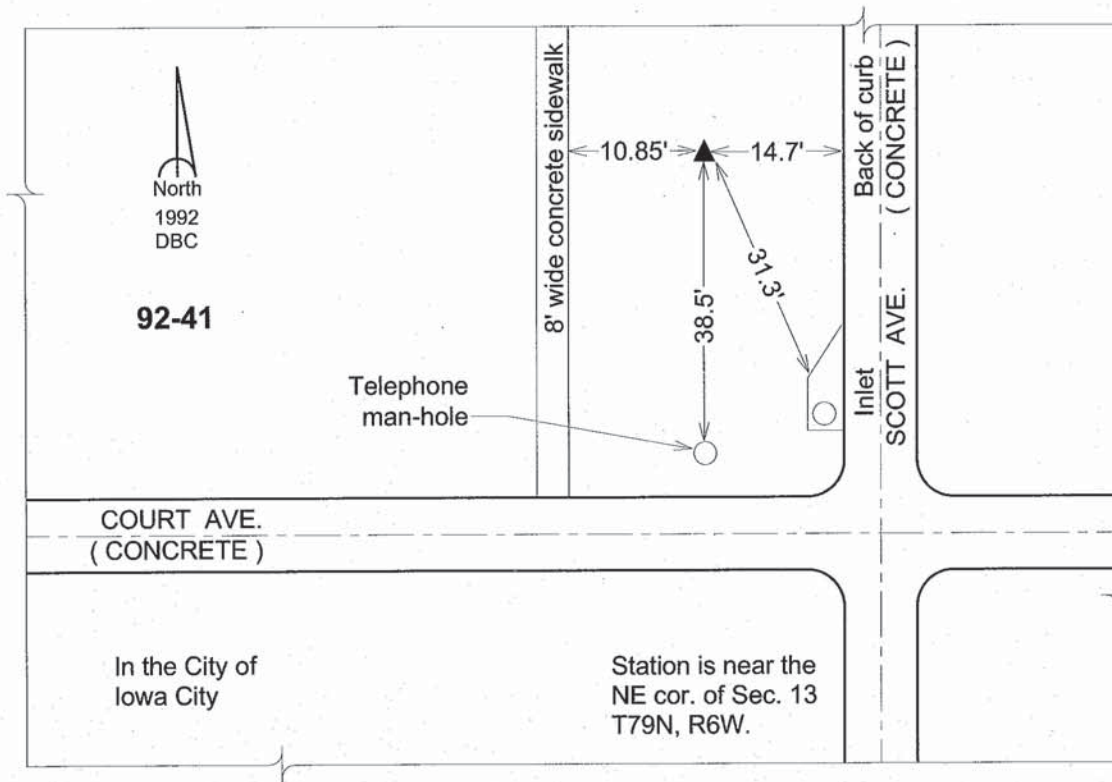
Northing: **610201.91sft**    Easting: **2192045.80sft**

Orthometric Height: **744.77sft**    Ellipsoid Height: **637.79sft**    **Geoid03**

Latitude: **41°39'26.07777"N**    Longitude: **91°28'52.24841"W**

Mapping Angle: **1°19'47"**    Combination Scale Factor: **0.99994961**

**Monument Type:** 5/8" dia. driven aluminum rod with a 2-1/2" dia. aluminum cap and permanent magnet encased in a 6" dia. PVC pipe with an aluminum access cover.



*This document was prepared by DCI and GBC for use by Johnson County, Iowa.*