

Johnson County, Iowa
Iowa South Zone (1402)
Horiz. Datum: NAD83(1996)
Vert. Datum: NAVD 1988
US Survey Feet
2006

Point Name: **51**

Designation: 92-51 Johnson County GPS Control Point (Set by ASI in 1992)

Northing: **588907.12sft** Easting: **2192037.55sft**

Orthometric Height: **669.02sft** Ellipsoid Height: **561.87sft** **Geoid03**

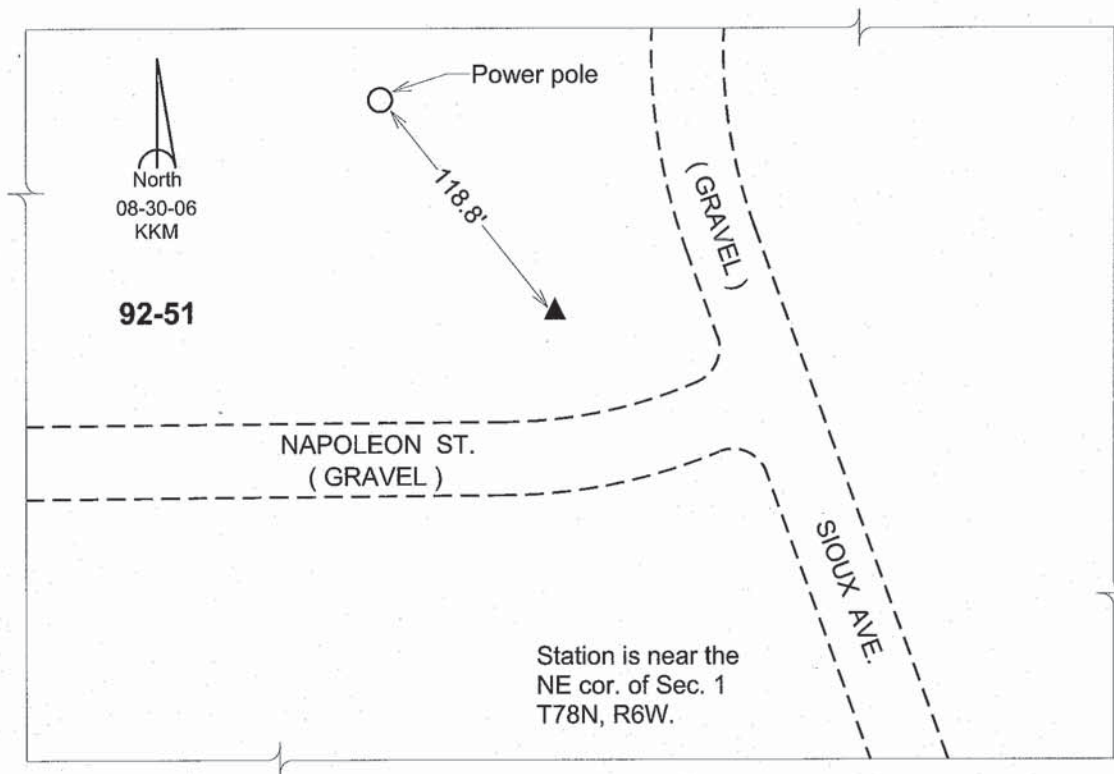
Latitude: **41°35'55.74845"N**

Longitude: **91°28'58.86151"W**

Mapping Angle: **1°19'43"**

Combination Scale Factor: **0.99994564**

Monument Type: 5/8" dia. driven aluminum rod with a 2-1/2" dia. aluminum cap and permanent magnet encased in a 6" dia. PVC pipe with an aluminum access cover.



This document was prepared by DCI and GBC for use by Johnson County, Iowa.