

Johnson County, Iowa
 Iowa South Zone (1402)
 Horiz. Datum: NAD83(1996)
 Vert. Datum: NAVD 1988
 US Survey Feet
2006

Point Name: **52**

Designation: 92-52 Johnson County GPS Control Point (Set by ASI in 1992)

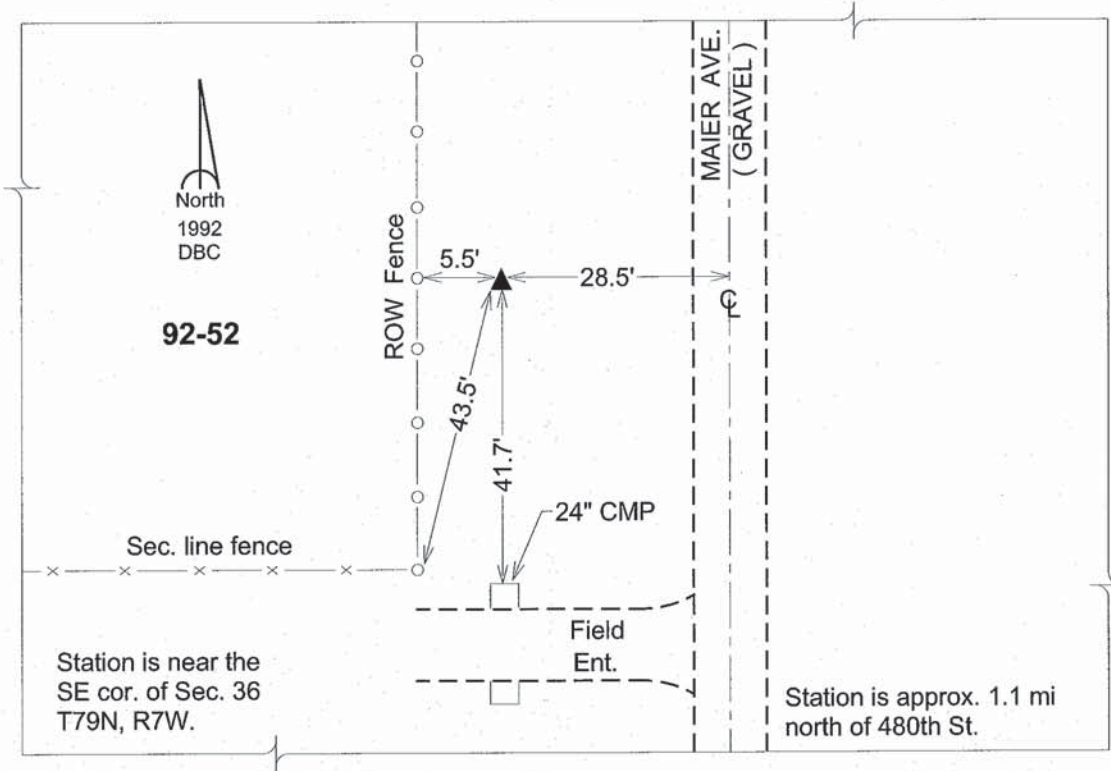
Northing: **588375.05sft** Easting: **2159990.97sft**

Orthometric Height: **647.51sft** Ellipsoid Height: **540.47sft** **Geoid03**

Latitude: **41°35'57.62095"N** Longitude: **91°36'00.71420"W**

Mapping Angle: **1°15'05"** Combination Scale Factor: **0.99994672**

Monument Type: 5/8" dia. driven aluminum rod with a 2-1/2" dia. aluminum cap and permanent magnet encased in a 6" dia. PVC pipe with an aluminum access cover.



This document was prepared by DCI and GBC for use by Johnson County, Iowa.