

Johnson County, Iowa
Iowa South Zone (1402)
Horiz. Datum: NAD83(1996)
Vert. Datum: NAVD 1988
US Survey Feet
2006

Point Name: **54**

Designation: 92-54 Johnson County GPS Control Point (Set by ASI in 1992)

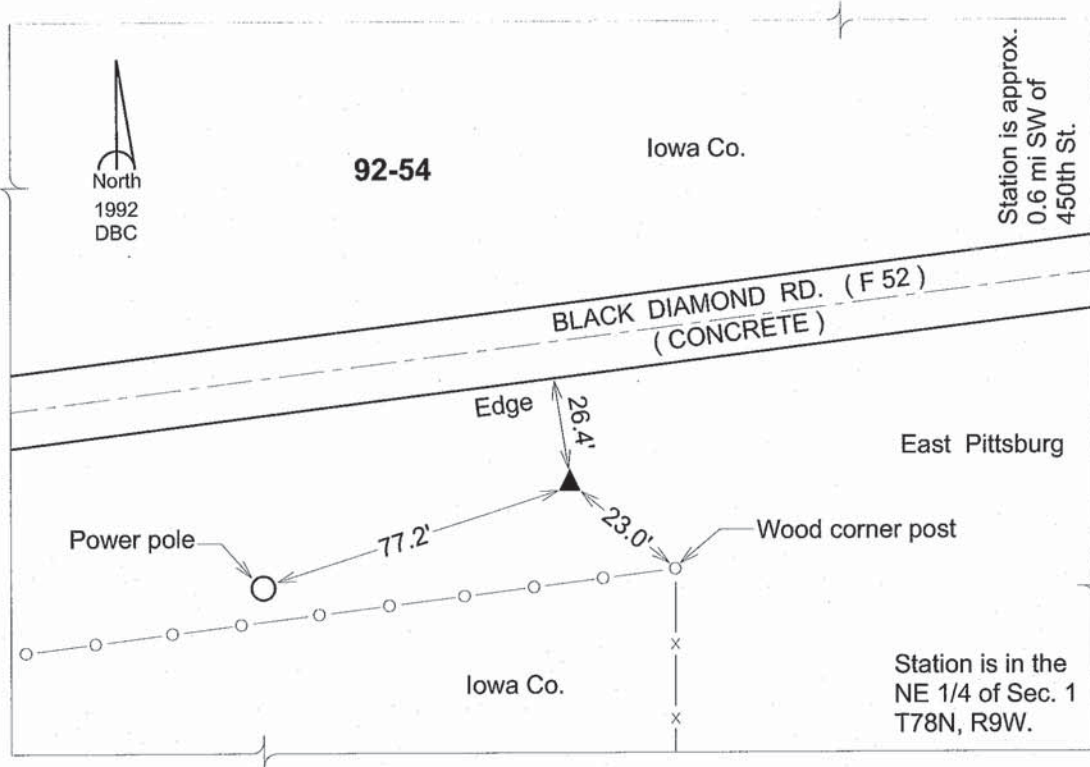
Northing: **587328.40sft** Easting: **2096259.86sft**

Orthometric Height: **715.04sft** Ellipsoid Height: **608.39sft** **Geoid03**

Latitude: **41°36'00.19028"N** Longitude: **91°49'59.66695"W**

Mapping Angle: **1°05'52"** Combination Scale Factor: **0.99994357**

Monument Type: 5/8" dia. driven aluminum rod with a 2-1/2" dia. aluminum cap and permanent magnet encased in a 6" dia. PVC pipe with an aluminum access cover.



This document was prepared by DCI and GBC for use by Johnson County, Iowa.