

Johnson County, Iowa
Iowa South Zone (1402)
Horiz. Datum: NAD83(1996)
Vert. Datum: NAVD 1988
US Survey Feet
2006

Point Name: **55**

Designation: 92-55 Johnson County GPS Control Point (Set by ASI in 1992)

Northing: **576182.80**sft Easting: **2098113.75**sft

Orthometric Height: **742.28**sft Ellipsoid Height: **635.51**sft **Geoid03**

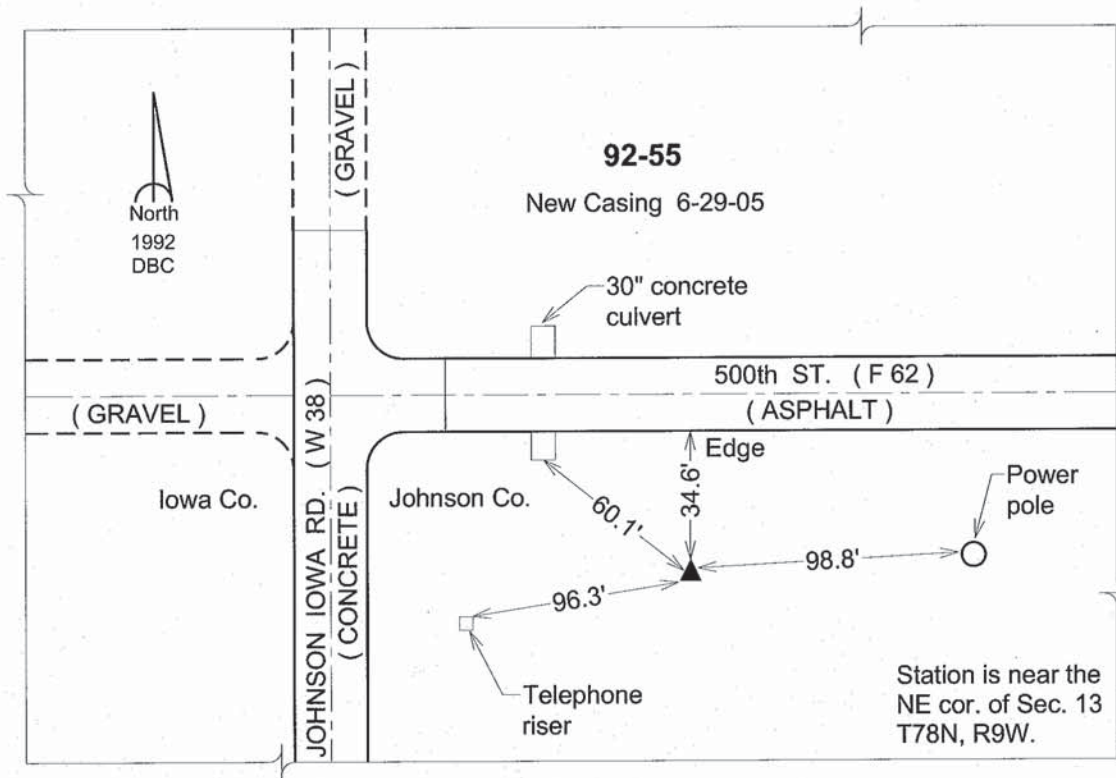
Latitude: **41°34'09.74147"N**

Longitude: **91°49'38.09095"W**

Mapping Angle: **1°06'07"**

Combination Scale Factor: **0.99993869**

Monument Type: 5/8" dia. driven aluminum rod with a 2-1/2" dia. aluminum cap and permanent magnet encased in a 6" dia. PVC pipe with an aluminum access cover.



This document was prepared by DCI and GBC for use by Johnson County, Iowa.