

Johnson County, Iowa
Iowa South Zone (1402)
Horiz. Datum: NAD83(1996)
Vert. Datum: NAVD 1988
US Survey Feet
2006

Point Name: **56**

Designation: 92-56 Johnson County GPS Control Point (Set by ASI in 1992).

Northing: **576859.79sft** Easting: **2129293.91sft**

Orthometric Height: **793.98sft** Ellipsoid Height: **687.03sft** **Geoid03**

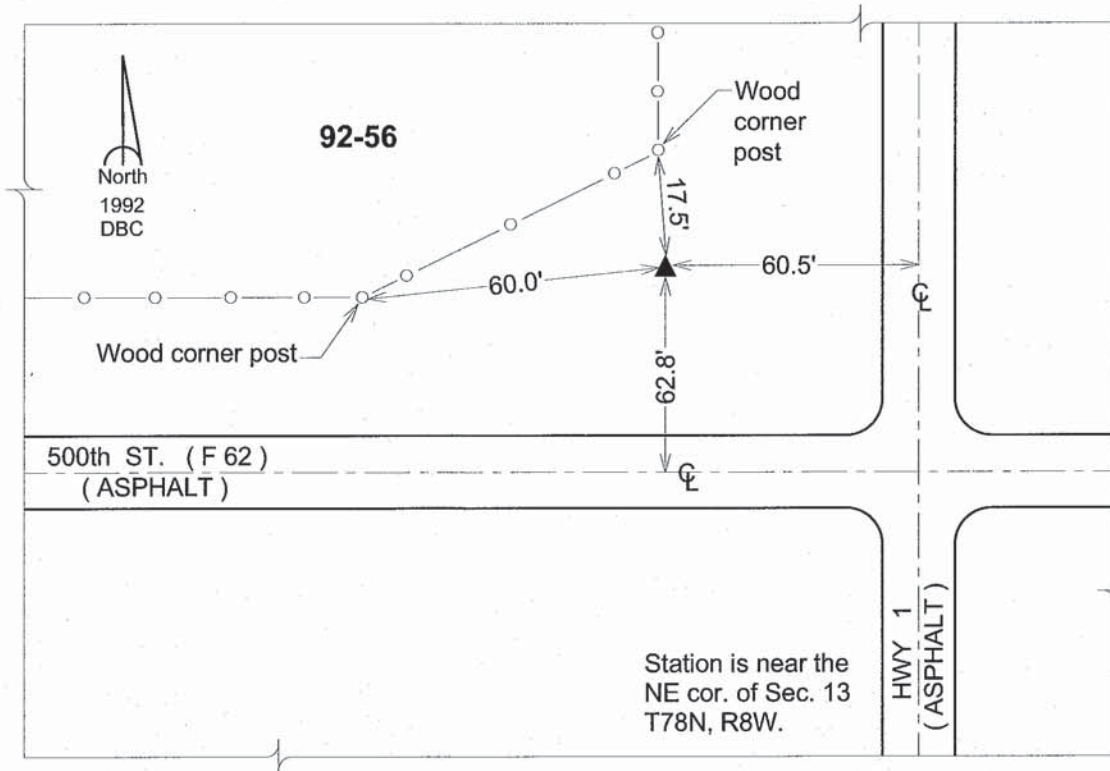
Latitude: **41°34'10.30317"N**

Longitude: **91°42'47.78317"W**

Mapping Angle: **1°10'37"**

Combination Scale Factor: **0.99993625**

Monument Type: 5/8" dia. driven aluminum rod with a 2-1/2" dia. aluminum cap and permanent magnet encased in a 6" dia. PVC pipe with an aluminum access cover.



This document was prepared by DCI and GBC for use by Johnson County, Iowa.