

Johnson County, Iowa
Iowa South Zone (1402)
Horiz. Datum: NAD83(1996)
Vert. Datum: NAVD 1988
US Survey Feet
2006

Point Name: **57**

Designation: 92-57 Johnson County GPS Control Point (Set by ASI in 1992)

Northing: **577389.76sft** Easting: **2160747.10sft**

Orthometric Height: **740.59sft** Ellipsoid Height: **633.48sft** **Geoid03**

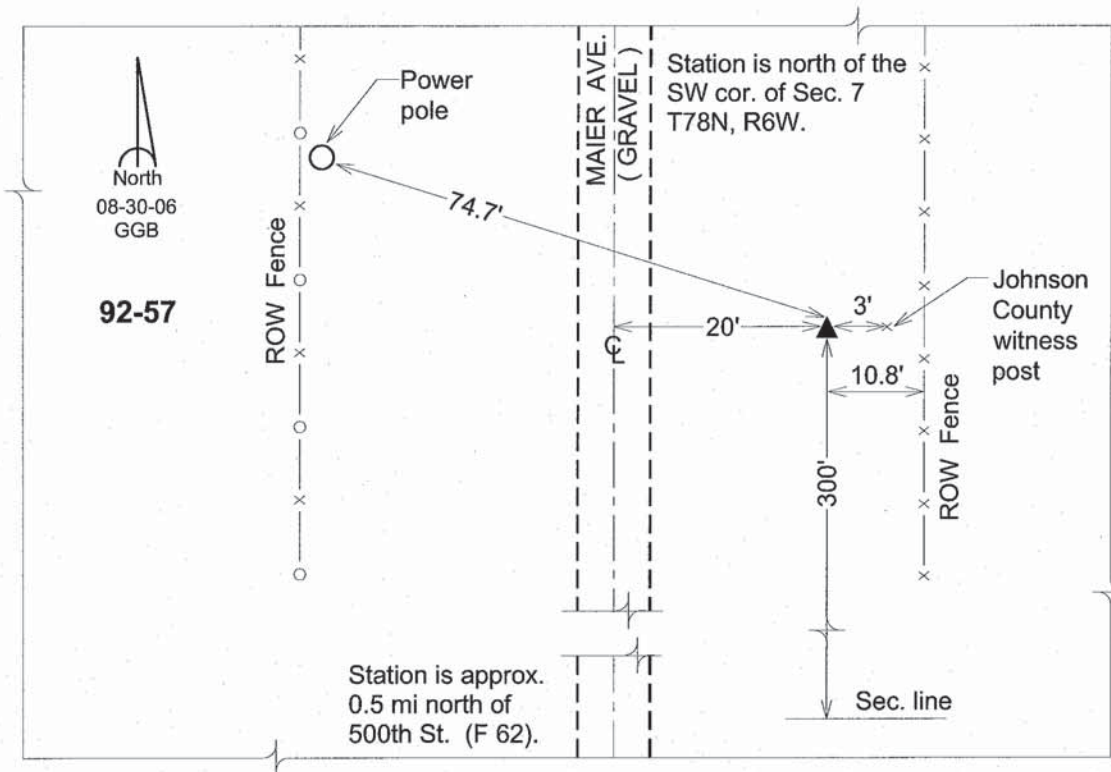
Latitude: **41°34'08.94996"N**

Longitude: **91°35'53.92518"W**

Mapping Angle: **1°15'10"**

Combination Scale Factor: **0.99993876**

Monument Type: 5/8" dia. driven aluminum rod with a 2-1/2" dia. aluminum cap and permanent magnet encased in a 6" dia. PVC pipe with an aluminum access cover.



This document was prepared by DCI and GBC for use by Johnson County, Iowa.