

Johnson County, Iowa
 Iowa South Zone (1402)
 Horiz. Datum: NAD83(1996)
 Vert. Datum: NAVD 1988
 US Survey Feet
2006

Point Name: **60**

Designation: 92-60 Johnson County GPS Control Point (Set by ASI in 1992)

Northing: **568053.93sft** Easting: **2224216.24sft**

Orthometric Height: **660.71sft** Ellipsoid Height: **553.37sft** **Geoid03**

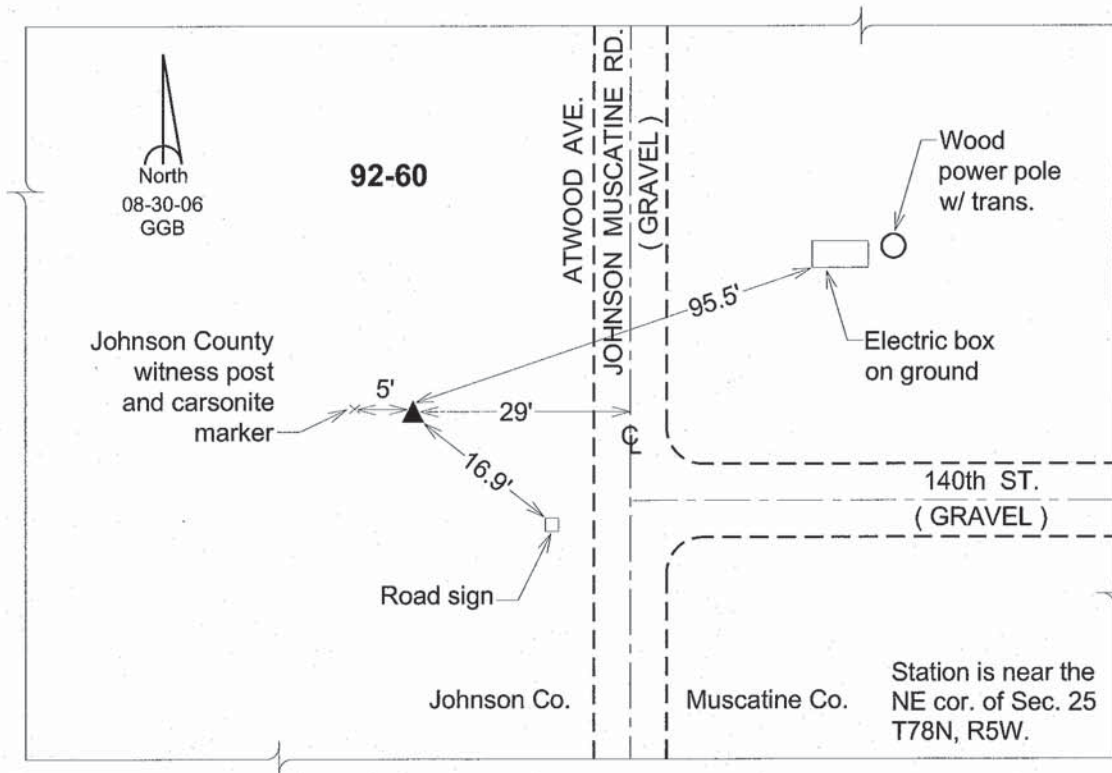
Latitude: **41°32'22.19557"N**

Longitude: **91°22'02.17872"W**

Mapping Angle: **1°24'17"**

Combination Scale Factor: **0.99993939**

Monument Type: 5/8" dia. driven aluminum rod with a 2-1/2" dia. aluminum cap and permanent magnet encased in a 6" dia. PVC pipe with an aluminum access cover.



This document was prepared by DCI and GBC for use by Johnson County, Iowa.