

Johnson County, Iowa
 Iowa South Zone (1402)
 Horiz. Datum: NAD83(1996)
 Vert. Datum: NAVD 1988
 US Survey Feet
2006

Point Name: **63**

Designation: 92-63 Johnson County GPS Control Point (Set by ASI in 1992)

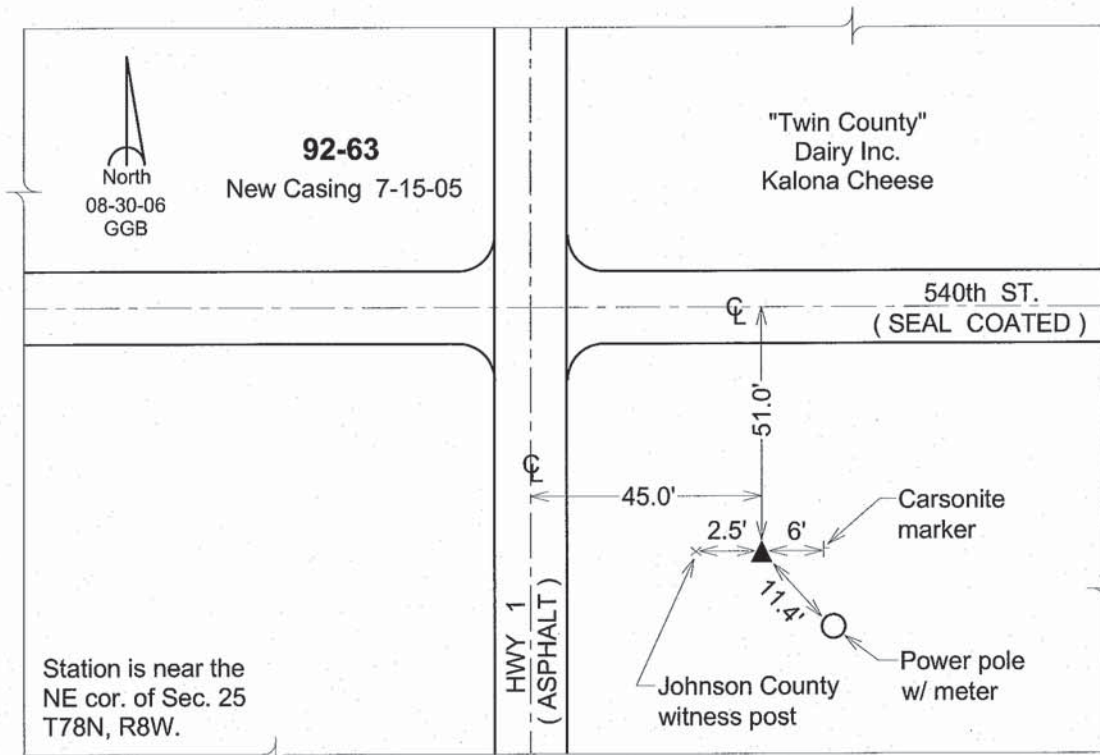
Northing: **566174.89sft** Easting: **2129614.93sft**

Orthometric Height: **757.98sft** Ellipsoid Height: **650.97sft** **Geoid03**

Latitude: **41°32'24.69357"N** Longitude: **91°42'46.44849"W**

Mapping Angle: **1°10'38"** Combination Scale Factor: **0.99993481**

Monument Type: 5/8" dia. driven aluminum rod with a 2-1/2" dia. aluminum cap and permanent magnet encased in a 6" dia. PVC pipe with an aluminum access cover.



This document was prepared by DCI and GBC for use by Johnson County, Iowa.