

**Johnson County, Iowa**  
Iowa South Zone (1402)  
Horiz. Datum: NAD83(1996)  
Vert. Datum: NAVD 1988  
US Survey Feet  
**2006**

Point Name: **65**

**Designation:** 92-65 Johnson County GPS Control Point (Set by ASI in 1992)

Northing: **555021.00sft** Easting: **2097931.36sft**

Orthometric Height: **727.29sft** Ellipsoid Height: **620.31sft** **Geoid03**

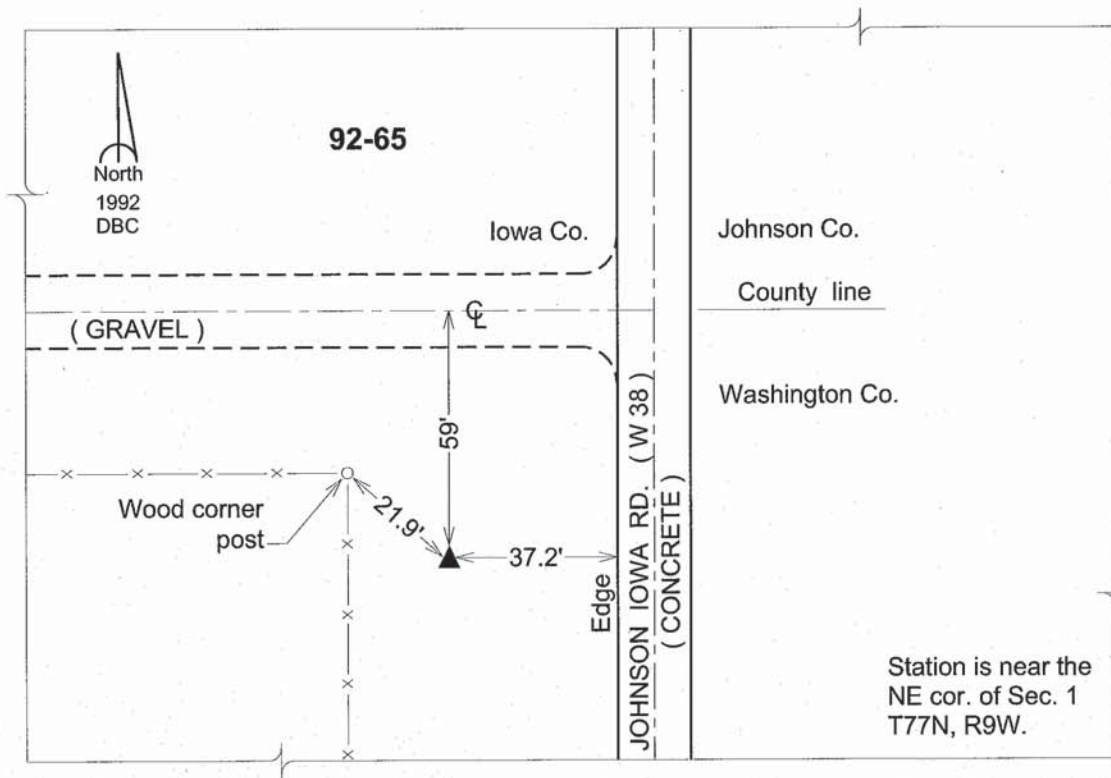
Latitude: **41°30'40.73544"N**

Longitude: **91°49'45.83685"W**

Mapping Angle: **1°06'02"**

Combination Scale Factor: **0.99993342**

**Monument Type:** 5/8" dia. driven aluminum rod with a 2-1/2" dia. aluminum cap and permanent magnet encased in a 6" dia. PVC pipe with an aluminum access cover.



*This document was prepared by DCI and GBC for use by Johnson County, Iowa.*