

Johnson County, Iowa
Iowa South Zone (1402)
Horiz. Datum: NAD83(1996)
Vert. Datum: NAVD 1988
US Survey Feet
2006

Point Name: **66**

Designation: 92-66 Johnson County GPS Control Point (Set by ASI in 1992)

Northing: **555457.16sft** Easting: **2113835.07sft**

Orthometric Height: **687.68sft** Ellipsoid Height: **580.63sft** **Geoid03**

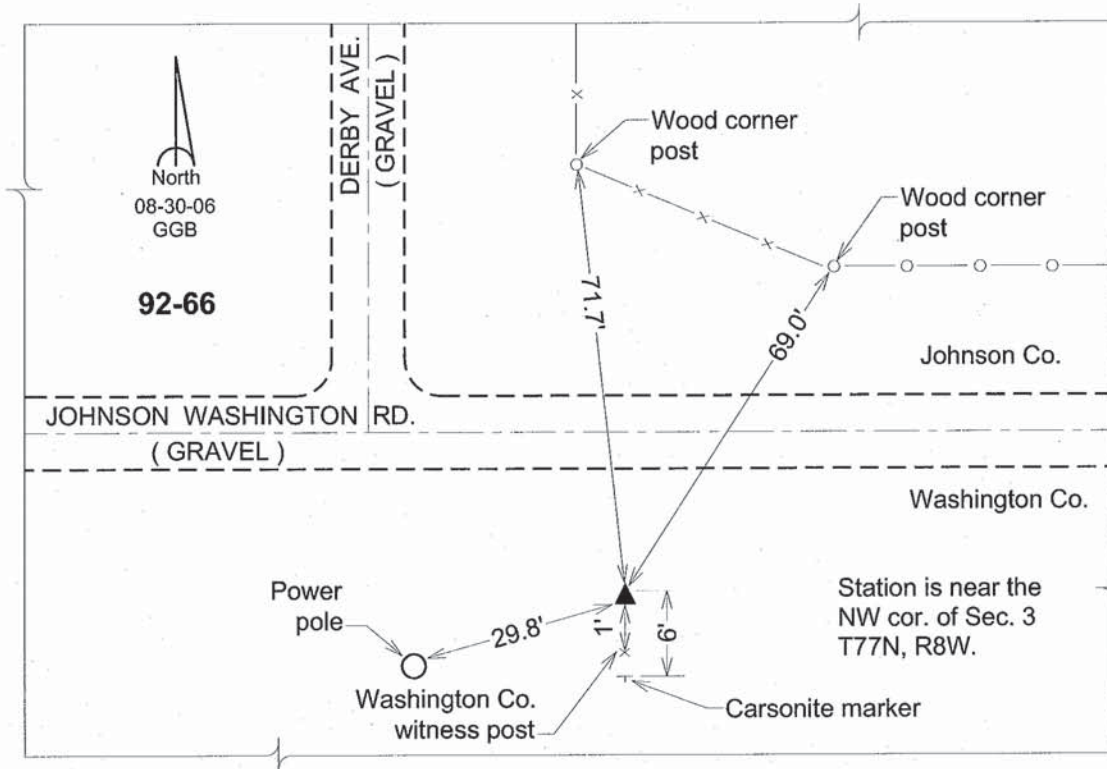
Latitude: **41°30'41.97379"N**

Longitude: **91°46'16.71817"W**

Mapping Angle: **1°08'19"**

Combination Scale Factor: **0.99993534**

Monument Type: 5/8" dia. driven aluminum rod with a 2-1/2" dia. aluminum cap and permanent magnet encased in a 6" dia. PVC pipe with an aluminum access cover.



This document was prepared by DCI and GBC for use by Johnson County, Iowa.