

Johnson County, Iowa
Iowa South Zone (1402)
Horiz. Datum: NAD83(1996)
Vert. Datum: NAVD 1988
US Survey Feet
2006

Point Name: **68**

Designation: 92-68 Johnson County GPS Control Point (Set by ASI in 1992)

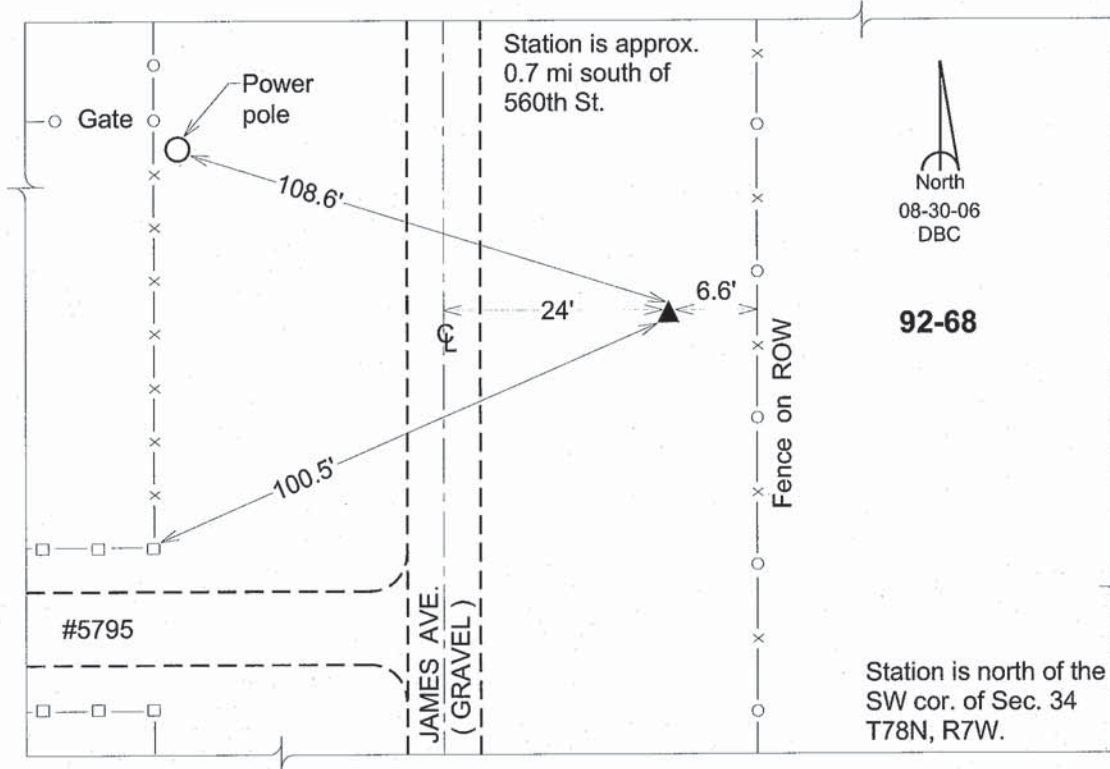
Northing: **556097.68**sft Easting: **2145194.90**sft

Orthometric Height: **731.89**sft Ellipsoid Height: **624.77**sft **Geoid03**

Latitude: **41°30'41.93965"N** Longitude: **91°39'24.42133"W**

Mapping Angle: **1°12'51"** Combination Scale Factor: **0.99993324**

Monument Type: 5/8" dia. driven aluminum rod with a 2-1/2" dia. aluminum cap and permanent magnet encased in a 6" dia. PVC pipe with an aluminum access cover.



This document was prepared by DCI and GBC for use by Johnson County, Iowa.