

Johnson County, Iowa
Iowa South Zone (1402)
Horiz. Datum: NAD83(1996)
Vert. Datum: NAVD 1988
US Survey Feet
2006

Point Name: **70**

Designation: 92-70 Johnson County GPS Control Point (Set by ASI in 1992)

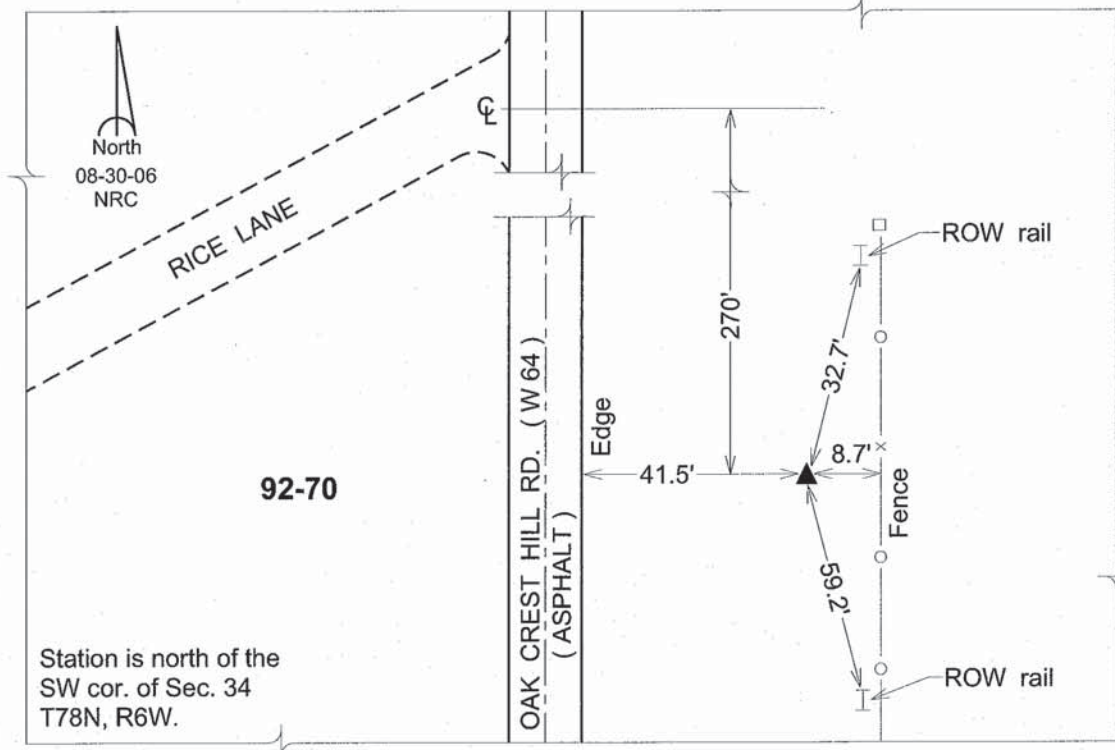
Northing: **557119.31sft** Easting: **2176965.50sft**

Orthometric Height: **747.06sft** Ellipsoid Height: **639.71sft** **Geoid03**

Latitude: **41°30'45.17054"N** Longitude: **91°32'26.61448"W**

Mapping Angle: **1°17'26"** Combination Scale Factor: **0.99993261**

Monument Type: 5/8" dia. driven aluminum rod with a 2-1/2" dia. aluminum cap and permanent magnet encased in a 6" dia. PVC pipe with an aluminum access cover.



This document was prepared by DCI and GBC for use by Johnson County, Iowa.