

**Johnson County, Iowa**  
Iowa South Zone (1402)  
Horiz. Datum: NAD83(1996)  
Vert. Datum: NAVD 1988  
US Survey Feet  
**2006**

Point Name: **75**

**Designation:** 92-75 Johnson County GPS Control Point (Set by ASI in 1992)

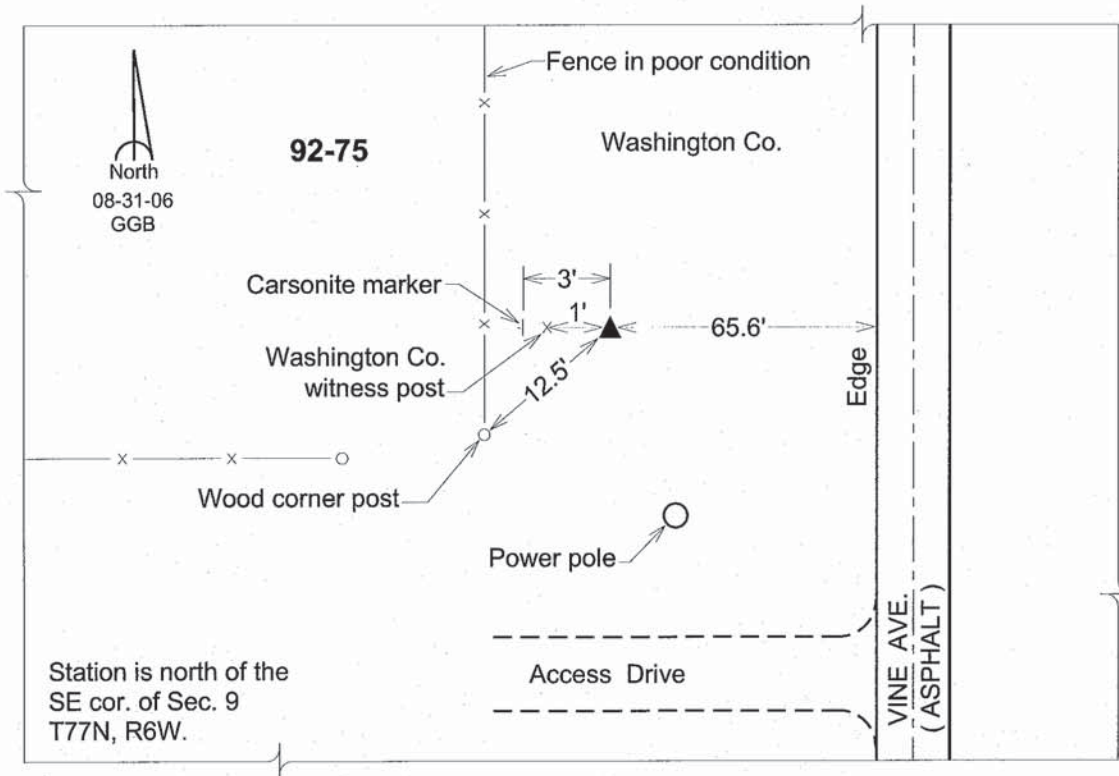
Northing: **546436.11sft**    Easting: **2176943.35sft**

Orthometric Height: **624.35sft**    Ellipsoid Height: **516.97sft**    **Geoid03**

Latitude: **41°28'59.65065"N**    Longitude: **91°32'30.06685"W**

Mapping Angle: **1°17'24"**    Combination Scale Factor: **0.99993582**

**Monument Type:** 5/8" dia. driven aluminum rod with a 2-1/2" dia. aluminum cap and permanent magnet encased in a 6" dia. PVC pipe with an aluminum access cover.



*This document was prepared by DCI and GBC for use by Johnson County, Iowa.*