

Johnson County, Iowa
 Iowa South Zone (1402)
 Horiz. Datum: NAD83(1996)
 Vert. Datum: NAVD 1988
 US Survey Feet
2006

Point Name: **81**

Designation: 92-81 Johnson County GPS Control Point (Set by ASI in 1992)

Northing: **527886.43sft** Easting: **2197153.04sft**

Orthometric Height: **617.15sft** Ellipsoid Height: **509.61sft** **Geoid03**

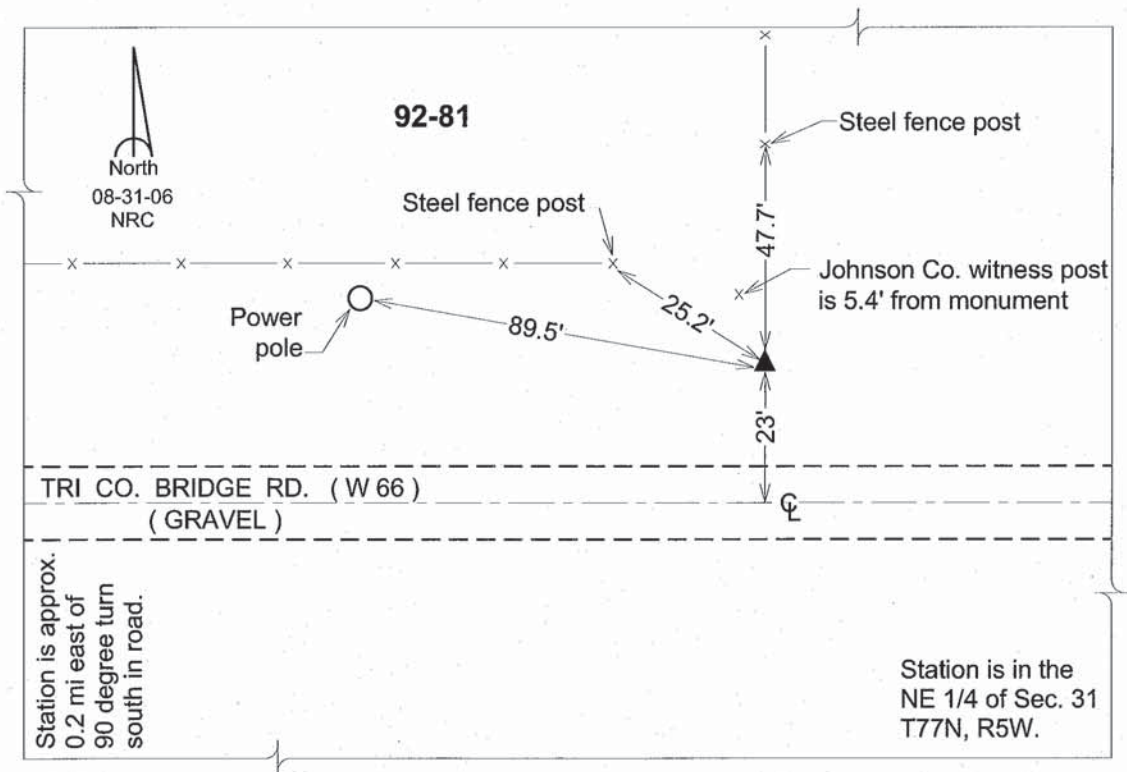
Latitude: **41°25'51.84537"N**

Longitude: **91°28'10.29606"W**

Mapping Angle: **1°20'15"**

Combination Scale Factor: **0.99993210**

Monument Type: 5/8" dia. driven aluminum rod with a 2-1/2" dia. aluminum cap and permanent magnet encased in a 6" dia. PVC pipe with an aluminum access cover.



This document was prepared by DCI and GBC for use by Johnson County, Iowa.