

**Johnson County, Iowa**  
Iowa South Zone (1402)  
Horiz. Datum: NAD83(1996)  
Vert. Datum: NAVD 1988  
US Survey Feet  
**2006**

Point Name: **84**

**Designation:** 92-84 Johnson County GPS Control Point (Set by ASI in 1992)

Northing: **604341.60sft**    Easting: **2176258.90sft**

Orthometric Height: **648.16sft**    Ellipsoid Height: **541.18sft**    **Geoid03**

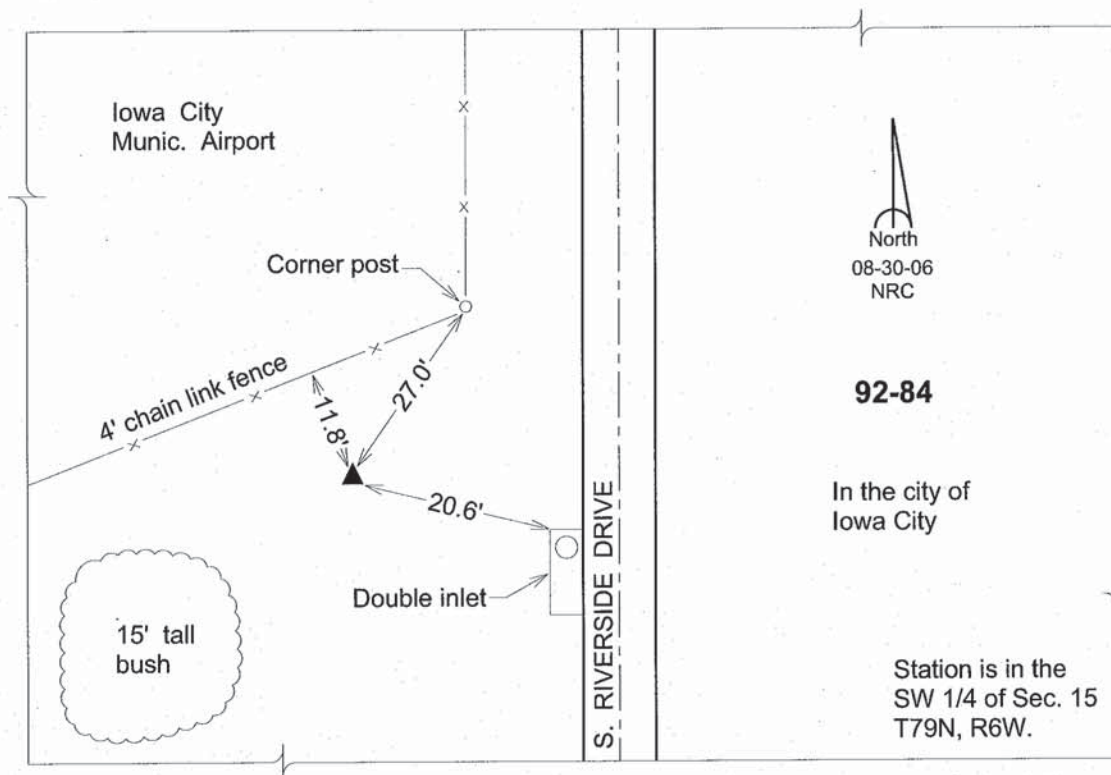
Latitude: **41°38'31.76219"N**

Longitude: **91°32'21.91030"W**

Mapping Angle: **1°17'29"**

Combination Scale Factor: **0.99995216**

**Monument Type:** 5/8" dia. driven aluminum rod with a 2-1/2" dia. aluminum cap and permanent magnet encased in a 6" dia. PVC pipe with an aluminum access cover.



*This document was prepared by DCI and GBC for use by Johnson County, Iowa.*