

Johnson County, Iowa
Iowa South Zone (1402)
Horiz. Datum: NAD83(1996)
Vert. Datum: NAVD 1988
US Survey Feet
2006

Point Name: **85**

Designation: USGS third order bench mark "665 15 LMT 1963"

Northing: **567693.13sft** Easting: **2192577.43sft**

Orthometric Height: **664.76sft** Ellipsoid Height: **557.45sft** **Geoid03**

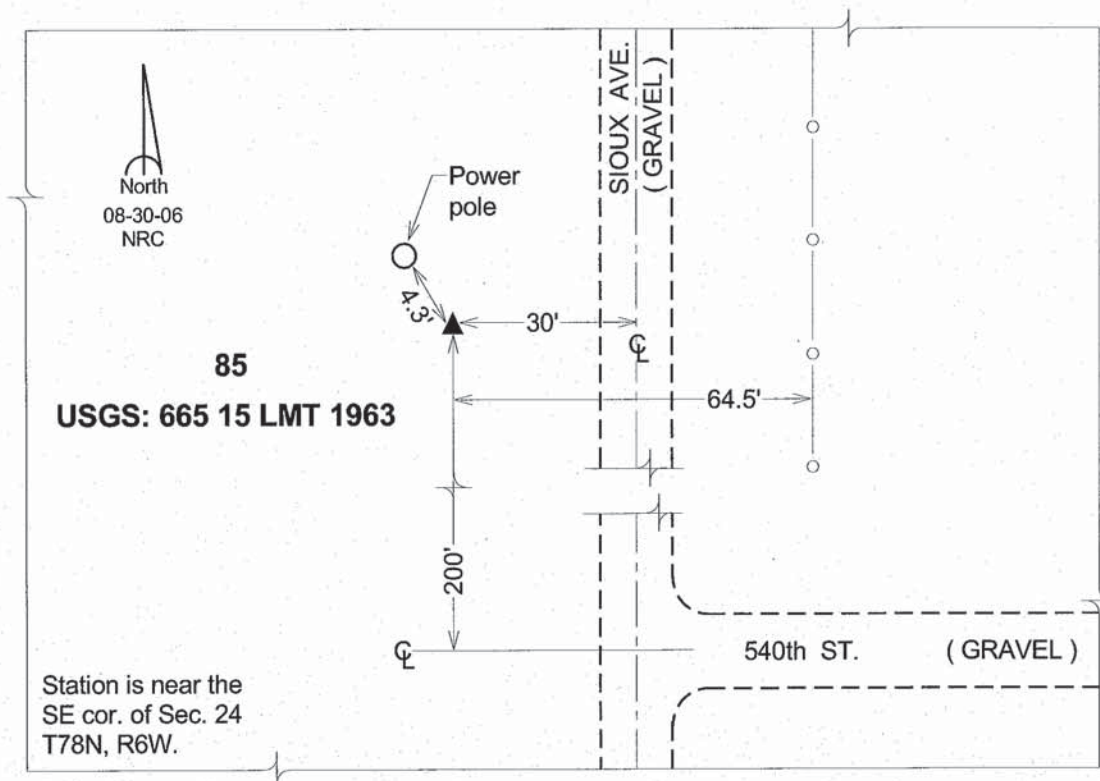
Latitude: **41°32'26.08798"N**

Longitude: **91°28'58.23209"W**

Mapping Angle: **1°19'43"**

Combination Scale Factor: **0.99993931**

Monument Type: A standard bench mark disk set in the top of a concrete monument.



This document was prepared by DCI and GBC for use by Johnson County, Iowa.