

Johnson County, Iowa
Iowa South Zone (1402)
Horiz. Datum: NAD83(1996)
Vert. Datum: NAVD 1988
US Survey Feet
2006

Point Name: 86

Designation: USGS third order bench mark "667 1 LMT 1963"

Northing: 599519.30sft Easting: 2191865.01sft

Orthometric Height: 666.44sft Ellipsoid Height: 559.37sft Geoid03

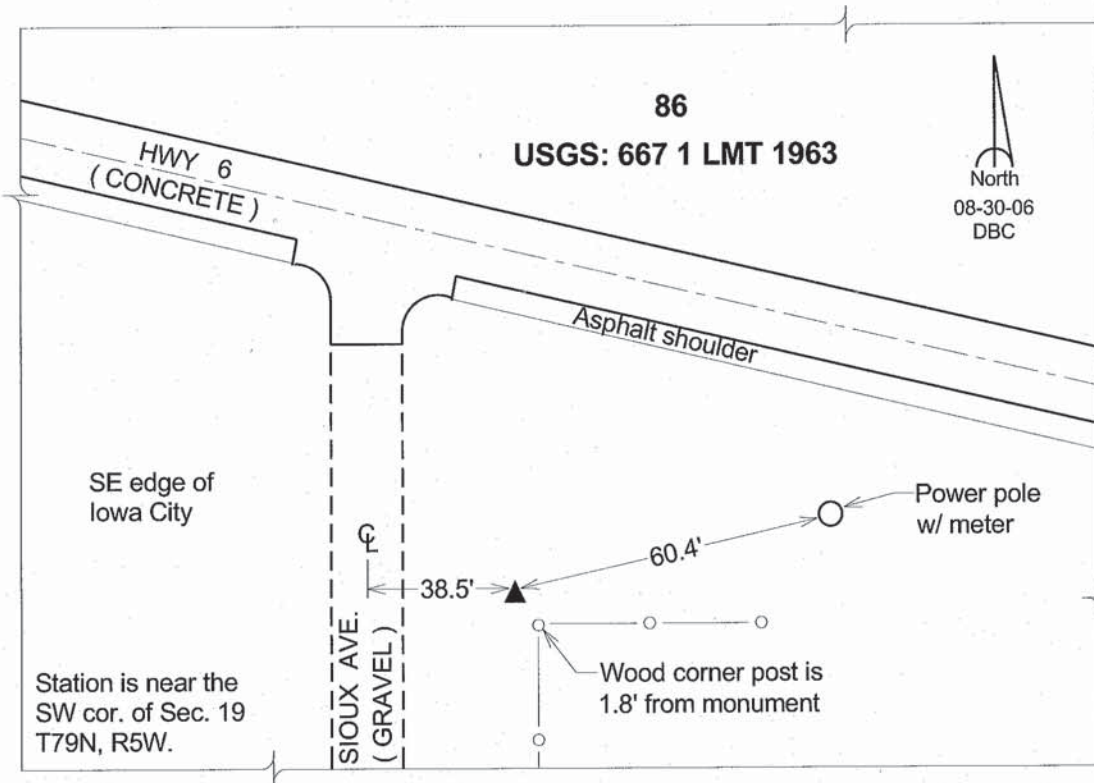
Latitude: 41°37'40.60625"N

Longitude: 91°28'57.89284"W

Mapping Angle: 1°19'44"

Combination Scale Factor: 0.99994941

Monument Type: A standard bench mark disk set in the top of a concrete monument.



This document was prepared by DCI and GBC for use by Johnson County, Iowa.