

**Johnson County, Iowa**  
 Iowa South Zone (1402)  
 Horiz. Datum: NAD83(1996)  
 Vert. Datum: NAVD 1988  
 US Survey Feet  
**2006**

Point Name: **92**

**Designation:** NGS first order horiz. station "CELLMAN 2 1969" PID: MG0897

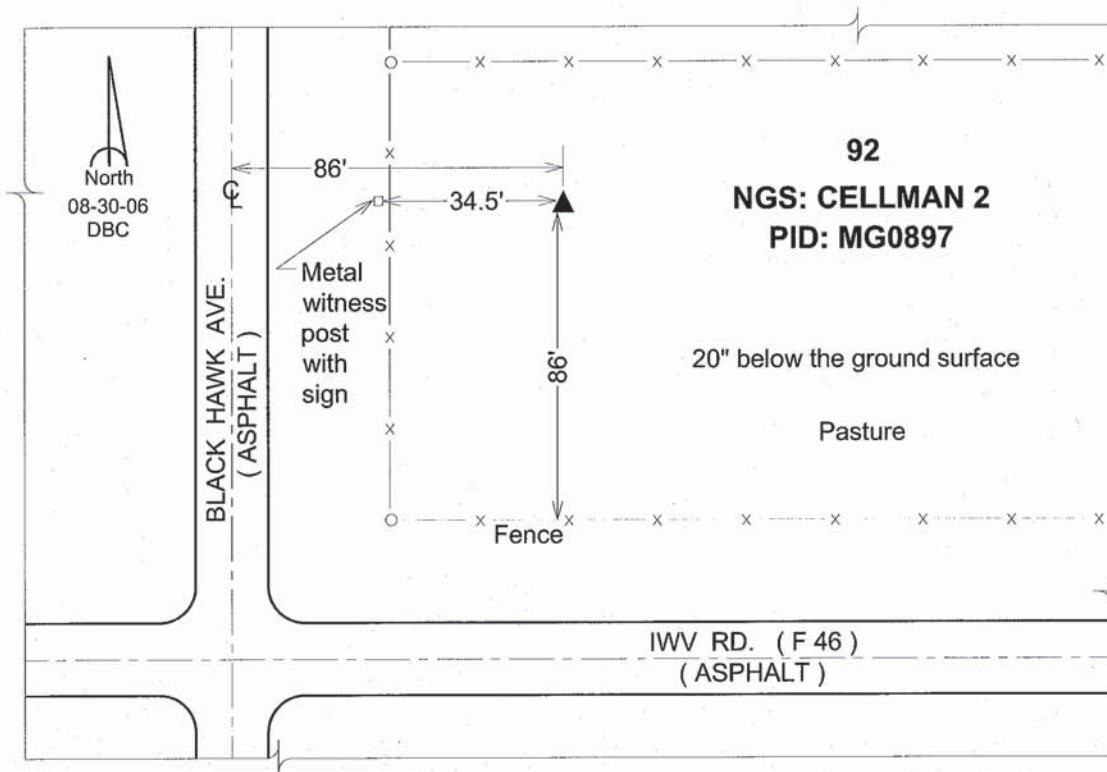
Northing: **609053.99sft**    Easting: **2103914.08sft**

Orthometric Height: **833.65sft**    Ellipsoid Height: **727.16sft**    **Geoid03**

Latitude: **41°39'33.33232"N**    Longitude: **91°48'13.36236"W**

Mapping Angle: **1°07'02"**    Combination Scale Factor: **0.99994563**

**Monument Type:** A standard triangulation disk set in the top of a square concrete monument.



*This document was prepared by DCI and GBC for use by Johnson County, Iowa.*