

**Johnson County, Iowa**  
Iowa South Zone (1402)  
Horiz. Datum: NAD83(1996)  
Vert. Datum: NAVD 1988  
US Survey Feet  
**2006**

Point Name: **201**

**Designation:** 2006-201 Johnson Co GPS Control Pt. (Set by DCI in 2006)

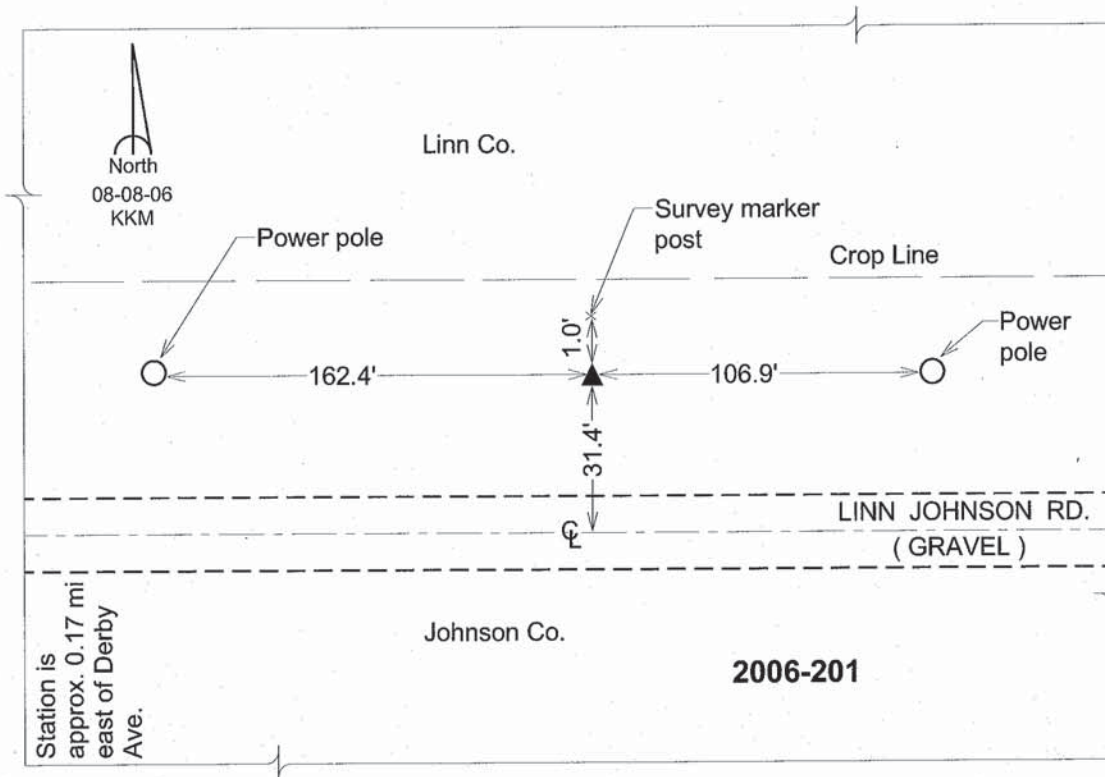
Northing: **683160.25sft**    Easting: **2114411.90sft**

Orthometric Height: **860.31sft**    Ellipsoid Height: **754.53sft**    **Geoid03**

Latitude: **41°51'43.26269"N**    Longitude: **91°45'35.55890"W**

Mapping Angle: **1°08'46"**    Combination Scale Factor: **0.99997892**

**Monument Type:** Berntsen Top Security Rod Monument with a 2-1/2" dia. domed survey cap and permanent magnet encased in a 6" dia. PVC pipe with a NGS style aluminum access cover.



*This document was prepared by DCI and GBC for use by Johnson County, Iowa.*