

Johnson County, Iowa
Iowa South Zone (1402)
Horiz. Datum: NAD83(1996)
Vert. Datum: NAVD 1988
US Survey Feet
2006

Point Name: **202**

Designation: 2006-202 Johnson Co GPS Control Pt. (Set by DCI in 2006)

Northing: **671729.86sft** Easting: **2108288.31sft**

Orthometric Height: **749.63sft** Ellipsoid Height: **643.79sft** **Geoid03**

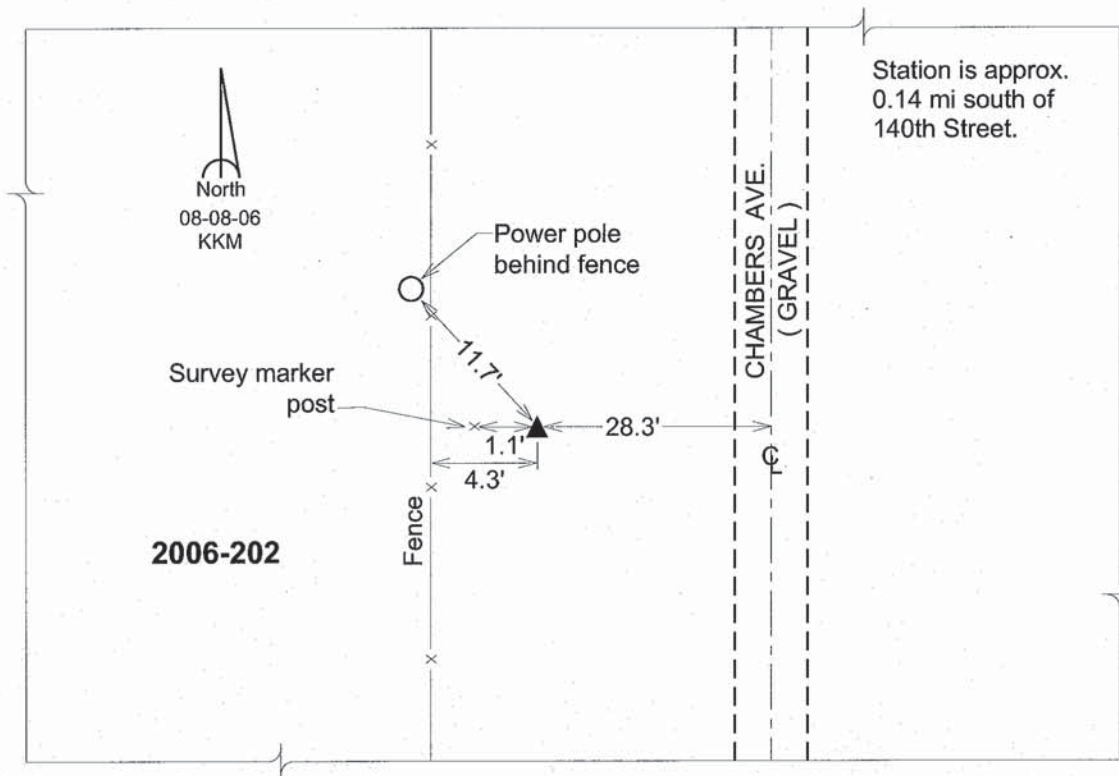
Latitude: **41°49'51.56556"N**

Longitude: **91°46'59.44990"W**

Mapping Angle: **1°07'51"**

Combination Scale Factor: **0.99997809**

Monument Type: Berntsen Top Security Rod Monument with a 2-1/2" dia. domed survey cap and permanent magnet encased in a 6" dia. PVC pipe with a NGS style aluminum access cover.



This document was prepared by DCI and GBC for use by Johnson County, Iowa.