

Johnson County, Iowa
Iowa South Zone (1402)
Horiz. Datum: NAD83(1996)
Vert. Datum: NAVD 1988
US Survey Feet
2006

Point Name: **205**

Designation: 2006-205 Johnson Co GPS Control Pt. (Set by DCI in 2006)

Northing: **668380.15sft** Easting: **2204824.14sft**

Orthometric Height: **828.94sft** Ellipsoid Height: **722.25sft** **Geoid03**

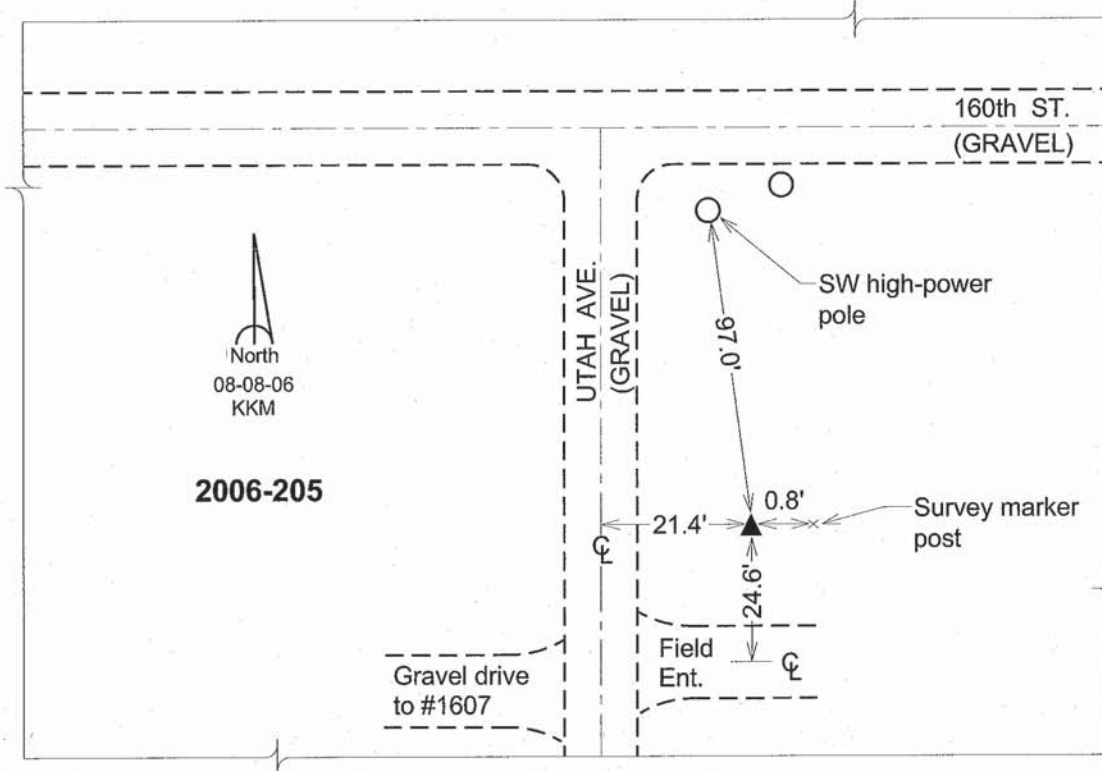
Latitude: **41°48'57.71972"N**

Longitude: **91°25'45.71238"W**

Mapping Angle: **1°21'50"**

Combination Scale Factor: **0.99997151**

Monument Type: Berntsen Top Security Rod Monument with a 2-1/2" dia. domed survey cap and permanent magnet encased in a 6" dia. PVC pipe with a NGS style aluminum access cover.



This document was prepared by DCI and GBC for use by Johnson County, Iowa.