

Johnson County, Iowa
Iowa South Zone (1402)
Horiz. Datum: NAD83(1996)
Vert. Datum: NAVD 1988
US Survey Feet
2006

Point Name: 207

Designation: 2006-207 Johnson Co GPS Control Pt. (Set by DCI in 2006)

Northing: 639765.52sft Easting: 2178138.57sft

Orthometric Height: 820.85sft Ellipsoid Height: 714.11sft Geoid03

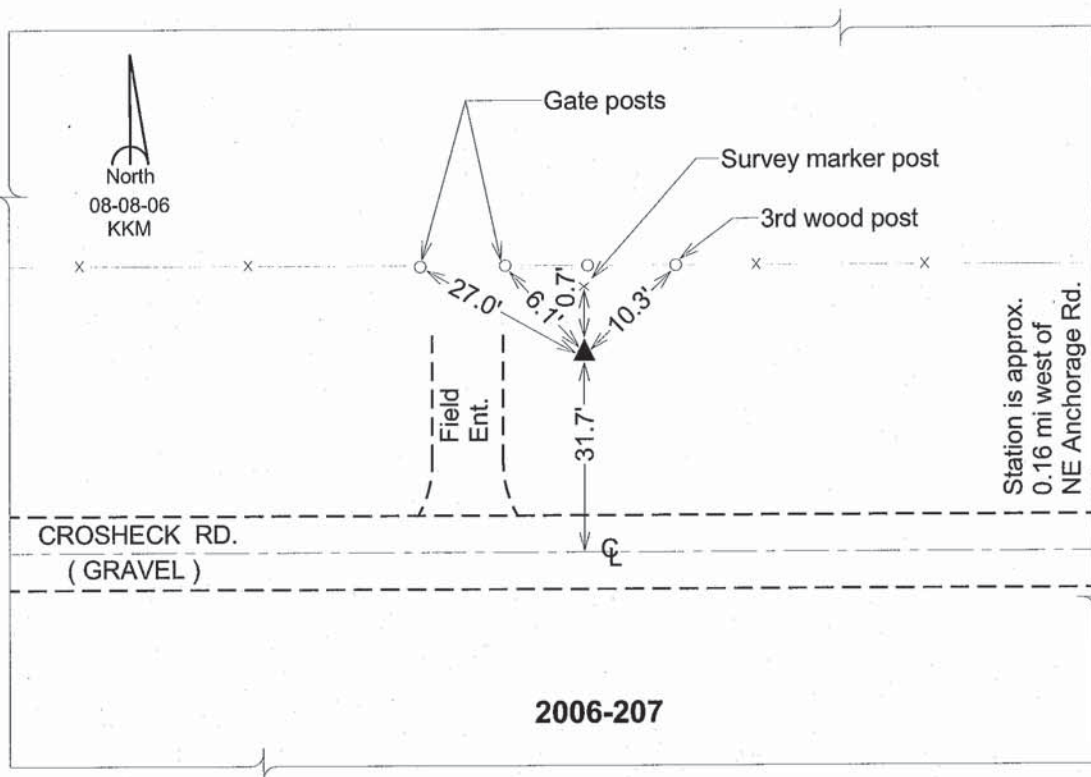
Latitude: 41°44'21.22688"N

Longitude: 91°31'46.59198"W

Mapping Angle: 1°17'52"

Combination Scale Factor: 0.99995839

Monument Type: Berntsen Top Security Rod Monument with a 2-1/2" dia. domed survey cap and permanent magnet encased in a 6" dia. PVC pipe with a NGS style aluminum access cover.



This document was prepared by DCI and GBC for use by Johnson County, Iowa.