

Johnson County, Iowa
 Iowa South Zone (1402)
 Horiz. Datum: NAD83(1996)
 Vert. Datum: NAVD 1988
 US Survey Feet
2006

Point Name: **208**

Designation: 2006-208 Johnson Co GPS Control Pt. (Set by DCI in 2006)

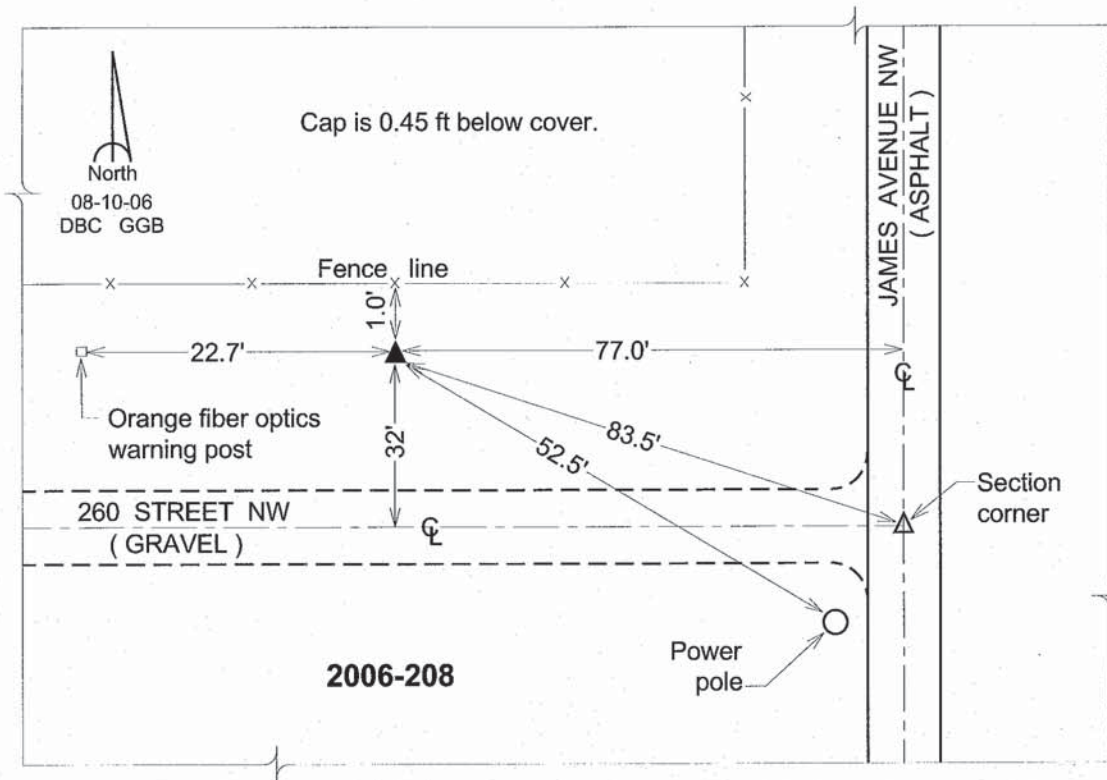
Northing: **641260.36sft** Easting: **2143395.62sft**

Orthometric Height: **769.53sft** Ellipsoid Height: **662.97sft** **Geoid03**

Latitude: **41°44'43.51532"N** Longitude: **91°39'24.34699"W**

Mapping Angle: **1°12'51"** Combination Scale Factor: **0.99996185**

Monument Type: Berntsen Top Security Rod Monument with a 2-1/2" dia. domed survey cap and permanent magnet encased in a 6" dia. PVC pipe with a NGS style aluminum access cover.



This document was prepared by DCI and GBC for use by Johnson County, Iowa.