

Johnson County, Iowa
Iowa South Zone (1402)
Horiz. Datum: NAD83(1996)
Vert. Datum: NAVD 1988
US Survey Feet
2006

Point Name: **209**

Designation: 2006-209 Johnson Co GPS Control Pt. (Set by DCI in 2006)

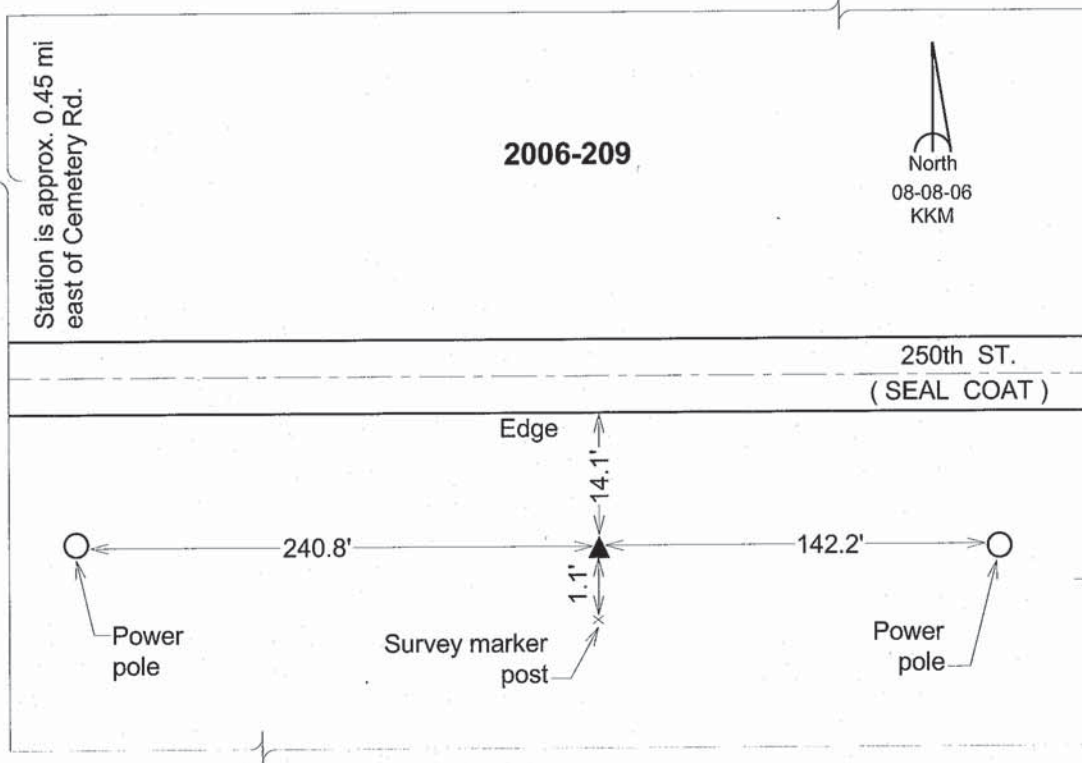
Northing: **645979.20sft** Easting: **2110963.39sft**

Orthometric Height: **740.62sft** Ellipsoid Height: **634.46sft** **Geoid03**

Latitude: **41°45'36.69582"N** Longitude: **91°46'30.86566"W**

Mapping Angle: **1°08'10"** Combination Scale Factor: **0.99996570**

Monument Type: Berntsen Top Security Rod Monument with a 2-1/2" dia. domed survey cap and permanent magnet encased in a 6" dia. PVC pipe with a NGS style aluminum access cover.



This document was prepared by DCI and GBC for use by Johnson County, Iowa.