

**Johnson County, Iowa**  
Iowa South Zone (1402)  
Horiz. Datum: NAD83(1996)  
Vert. Datum: NAVD 1988  
US Survey Feet  
**2006**

Point Name: **210**

**Designation:** 2006-210 Johnson Co GPS Control Pt. (Set by DCI in 2006)

Northing: **626893.07sft** Easting: **2110218.50sft**

Orthometric Height: **769.16sft** Ellipsoid Height: **662.82sft** **Geoid03**

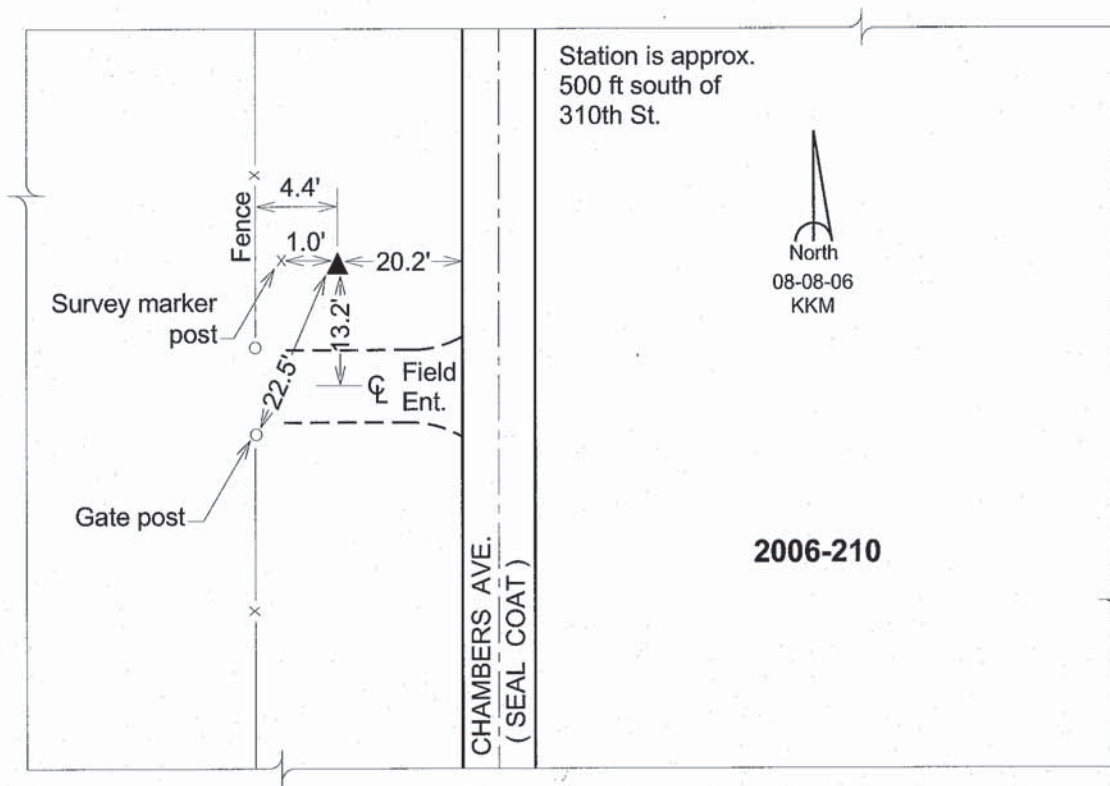
Latitude: **41°42'28.31818"N**

Longitude: **91°46'45.67366"W**

Mapping Angle: **1°08'00"**

Combination Scale Factor: **0.99995584**

**Monument Type:** Berntsen Top Security Rod Monument with a 2-1/2" dia. domed survey cap and permanent magnet encased in a 6" dia. PVC pipe with a NGS style aluminum access cover.



*This document was prepared by DCI and GBC for use by Johnson County, Iowa.*